

OUTDOOR CABINET  
ENERGY STORAGE SYSTEM

100KW 215KWH

ON/OFF Grid Model (optional)

Outdoor energy storage cabinet integrates energy storage battery, modular PCs, energy management monitoring system, power distribution system, environmental control system and fire control system. Adopting modularized PCS, it is easy to maintain and expand capacity, and the outdoor cabinet adopts front maintenance, which can reduce the footprint and maintenance access, and is characterized by safety and reliability, rapid deployment, low cost,high energy efficiency and intelligent management.



PRODUCT DESCRIPTION

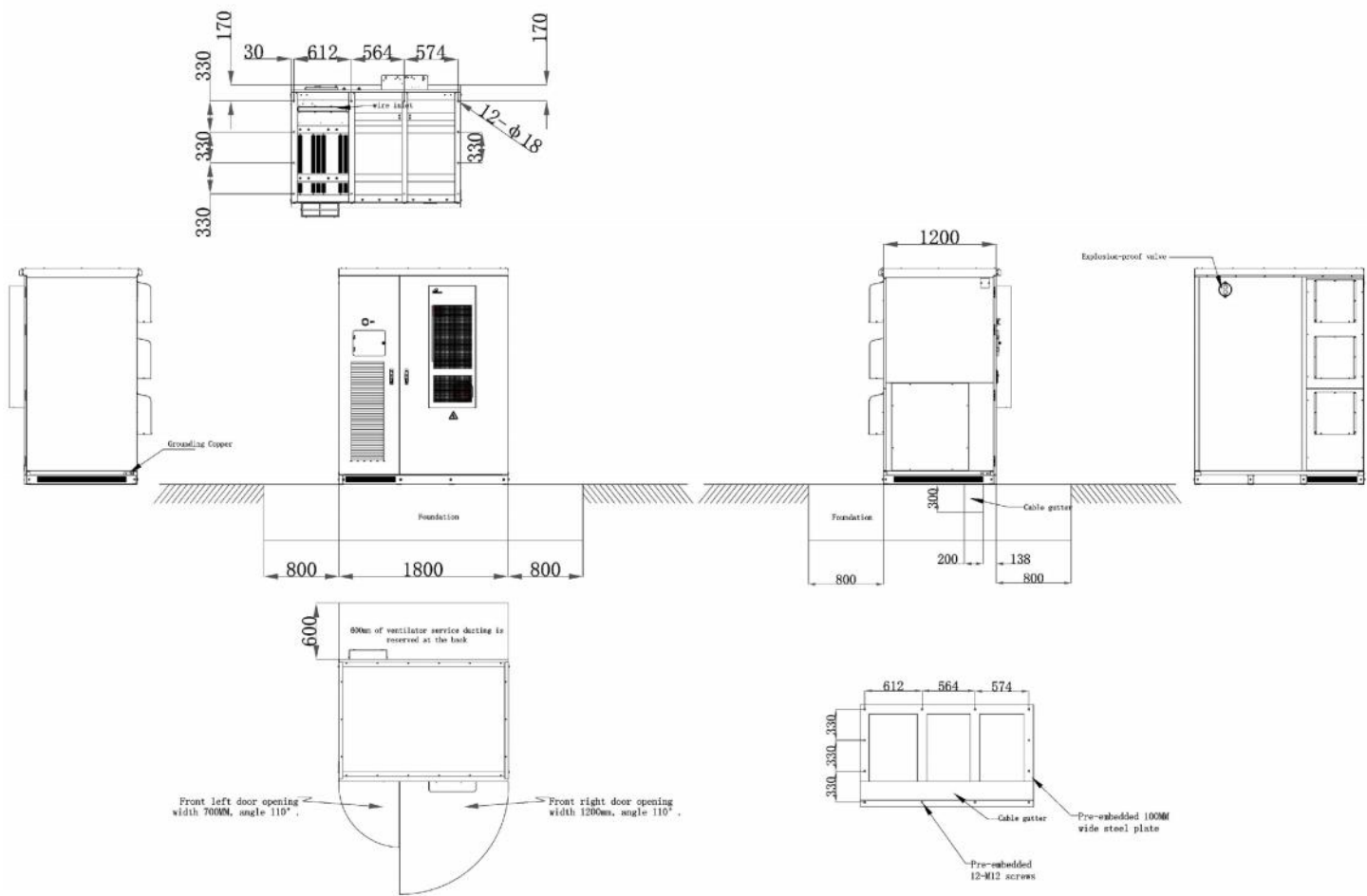


PERFORMANCE PARAMETER

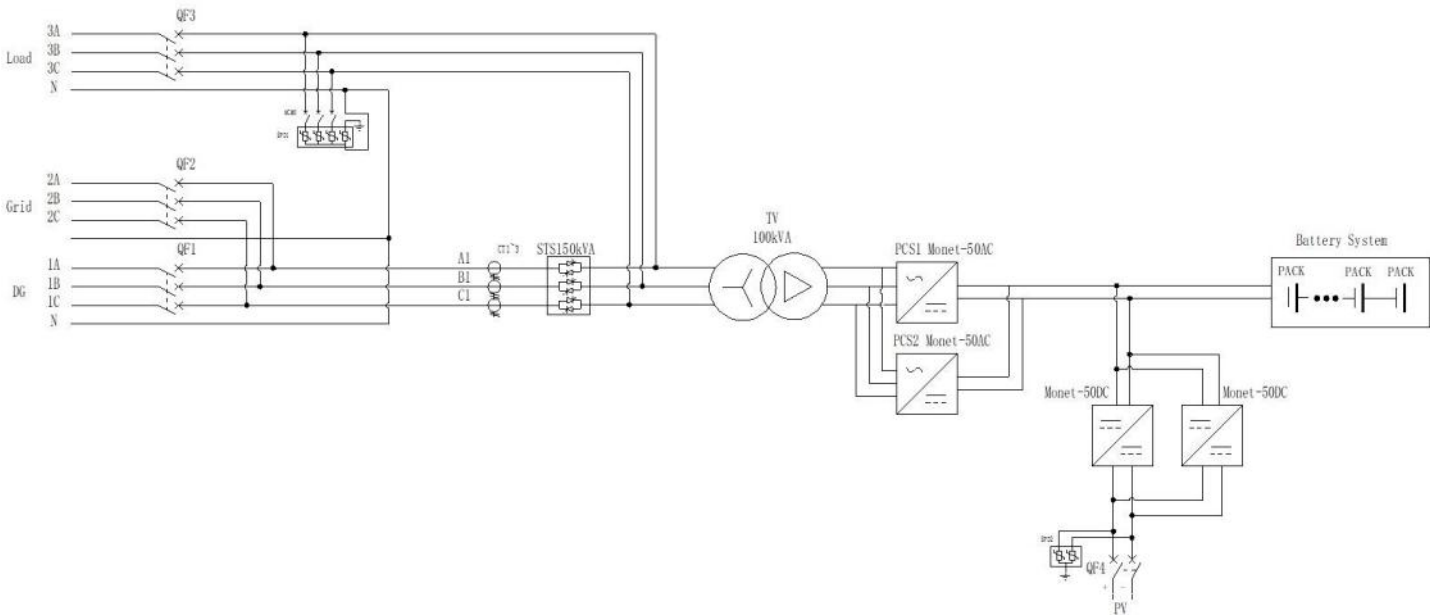
Energy Storage System	SWMonet-100TS(215kWh)
Battery Rated Energy Storage Capacity	215kWh
System Rated Voltage	768V
System Voltage Range	672V~864V
Battery Type	Lithium iron phosphate battery(LFP)
Battery Pack Series and Parallel Connection	1P*20S*12S
Maximum Charge and Discharge Current	81A
Rated AC Power	100kW
Rated AC Current	140A
Rated AC Voltage	400V , 3W+N+PE/3W+PE
Rated AC Frequency	50/60Hz
Current Total Harmonic Distortion Rate THDI	<5%(rated power)
Power Factor	-1 lead ~ +1 lag
Voltage Total Harmonic Distortion THDU	<3%(linear load)
Degree of Protection	IP54
Protection Level	/
Isolation Method	Transformer isolation
Power Consumption During Shutdown	< 100W(without transformer)
Show	LCD
Relative Humidity	0~95%(no condensation)
Noise	< 70dB
Ambient Temperature	-25°C~60°C(Derating above 45°C)
Cooling Method	Intelligent air Cooling
Altitude	2000m( > 2000m derating)
BMS Communication	CAN
EMS Communication	Ethernet/485
Dimensions(W*D*H)	1800*1200*2300mm
Weight(approx.)	3000kg

Battery System	
Battery Type	Lithium iron phosphate battery(LFP)
Nominal Voltage	3.2V
Voltage Range	2.8V~3.6V
Nominal Capacity	280Ah
Maximum Operating Temperature Range(charging)	0~50°C
Maximum Operating Temperature Range(discharging)	-10~50°C
Cell Series and Parallel connection	1P20S
Rated Energy	17.92kWh
Nominal Voltage	64V
Voltage Range	56V~72V
Weight(approx.)	135kg
Overall dimensions(W*D*H)	460*940*230mm
Rated Energy Storage	215kWh
System Rated Voltage	768V
System Voltage Range	672V~864V
Series and Parallel Mode	1P*20S*12S
Number of Electrical Boxes Included	12
Weight(approx.)	1620kg

BASE REFERENCE DIAGRAM



ELECTRICAL WIRING DIAGRAM



PRODUCT DETAILS AND CASES

