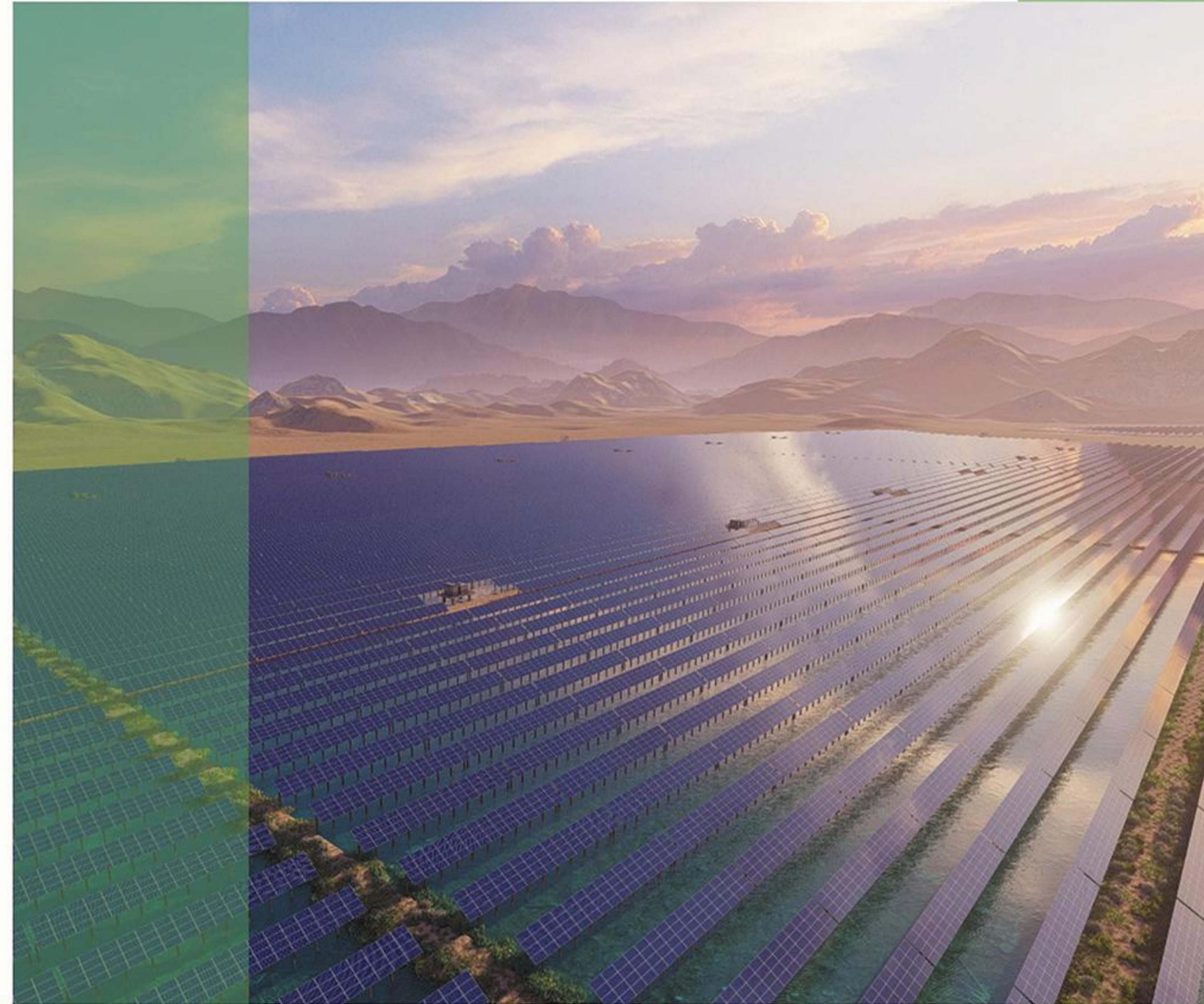




200+ Export countries **950^{MW}** Capacity of production

SUNWAY SOLAR—YOUR PROFESSIONAL PV SUPPLIER



SUNWAY SOLAR CO.,LTD

Mob:+86 138 6693 1144

Tel:+86 551 6363 7817

www.sunwaypv.com

Add:50 meters north of Huguang Road and Qianzhang Road,
Shushan District, Hefei City, Anhui Province

Company Products Catalogue

Solar System / Solar Panel / Solar Inverter / Solar Battery

Sunway Solar Co.,Ltd



Professional

We founded in 2002, 500MW solar panel production capacity , millions of battery, charge controller and inverter production capacity

Service

Our mission is to provide best service to our customers and concentrate on building a long-term partnership

Certification

Our Products are certified by TUV(Germany) , ETL(America) ,CE

Delivery

Products are exported to more than 150 countries and delivery fast

OUR ADVANTAGES

Building up the global sales network organization to ensure convenient and best products and service for our customers

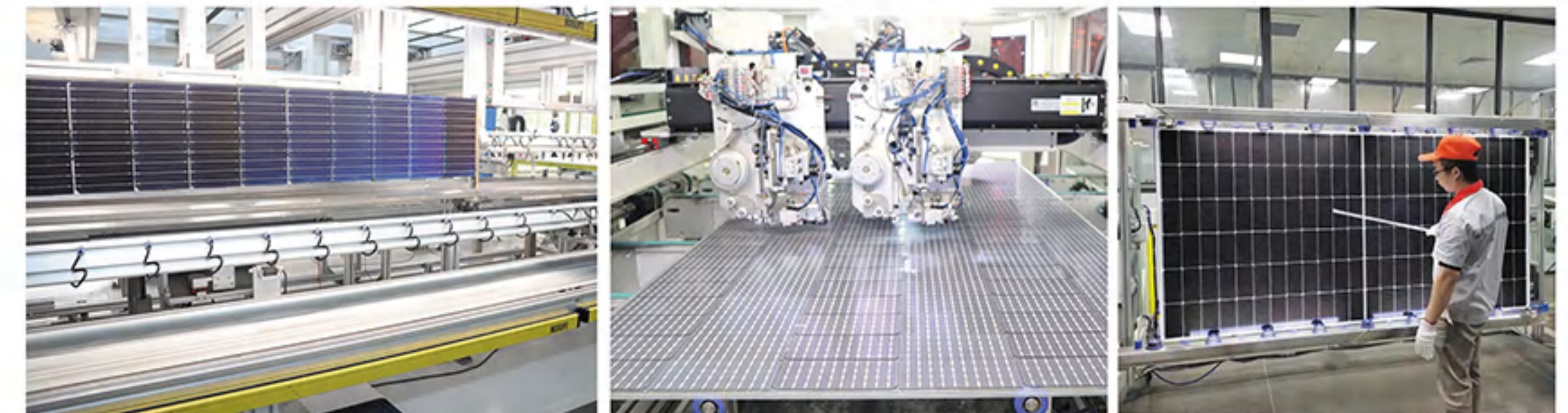
OUR COMPANY

Founded in 2017, SUNWAY SOLAR CO., LTD. has established a strong reputation as a manufacturer of high-quality roof-integrated solar.

Technical knowledge, skill with quality products, and commitments are the key factors leading us to enhance our customer database. Market knowledge and dedicated and well-trained professional teams have allowed us to operate as one of the best sources of solar solutions for domestic, community, and industrial.

Over the past 6+ years, SUNWAY SOLAR has experienced exponential growth by providing a wide range of products such as solar panels, solar inverters, energy storage batteries, photovoltaic power off-grid systems, on-grid systems, hybrid systems, mounting systems, and other photovoltaic series products and one-step energy storage photovoltaic power solutions. In 2022, we successfully signed long-term exclusive agency agreements in Lithuania, Estonia, and Latvia. And we are going to expand in different states and regions in the future.

We at SUNWAY SOLAR CO LTD believe that solar energy is the most attractive source for generating power, especially in the current global shortage of clean energy. Our adheres to the mission of making China into the world and our products have been exported to more than 100 countries and regions overseas.





OUR TEAM

Professional • Solidarity • Principled

We established a very professional team. Each of our colleague can provide you best service. If you have any question please contact us.

Our team adheres to the principle of good faith, standard and high efficiency, obtains the reputation by the high quality service, and wholeheartedly provides the high quality solution for the general customers.

CERTIFICATIONS



Our PV solutions and complete range of products, On grid, Off- grid, Hybrid. Include a wide variety of internal components and hardware that comply with global industry standards. We offer multiple certificates for all components in our product line that follow local standards and codes required for your specific regions or markets. This ensures safe installations and promotes optimal photovoltaic practices.





TABLE OF CONTENTS

01 Solar System

On Grid Solar System	01
Off Grid Solar System	03
Solar Accessories	04
Hybrid Solar System	05
Energy Storage System	07
Container Energy Storage System	08

02 Solar Panel

PERC Tech Solar Panel	09
Hot Selling Solar Panel	10
PERC Solar Panel Parameters	11
N Type TOPcon Solar Panel	19
HJT Solar Panel	20
N Type Solar Panel Parameters	21

03 Solar Inverter

EU Solar Inverter	25
US Solar Inverter	27

04 Solar Battery

Wall Mounted Lithium Battery	29
High Voltage Lithium Battery	30
Rack Mounted Lithium Battery	31
Gel Lead Acid Battery	33
Lithium Iron Phosphate Battery	34

ON GRID SOLAR SYSTEM

On-grid or grid-tie solar systems are by far the most common and widely used by homes and businesses. These systems do not need batteries and use common solar inverters and are connected to the public electricity grid. Any excess solar power that you generate is exported to the electricity grid and you usually get paid a feed-in-tariff or credits for the energy you export.



SYSTEM COMPONENTS



Half Cell Solar Panel



On Grid Solar Inverter



PV Cable



MC4 Connector

Configuration of PV System

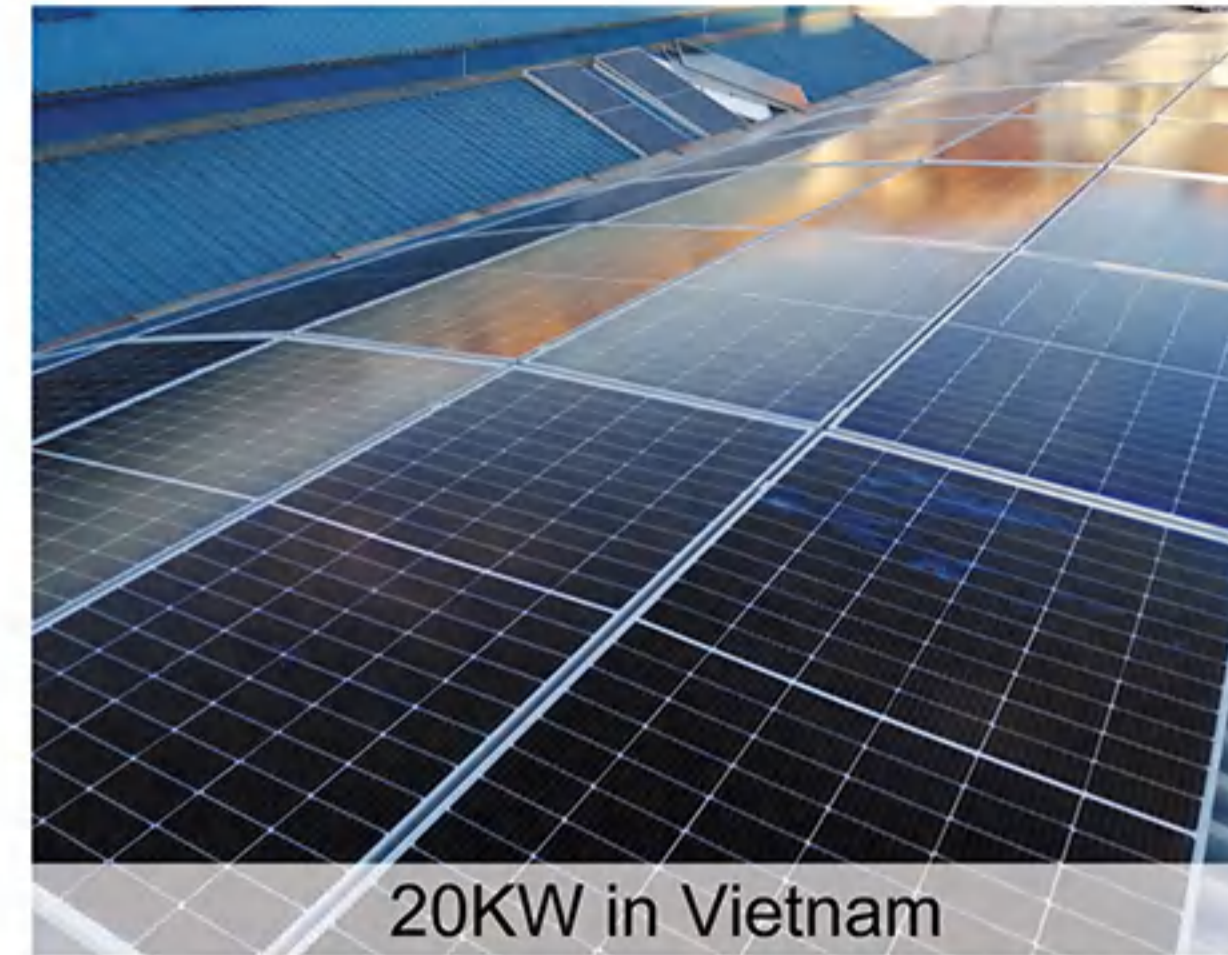
- Solar Panel
- Roof/Ground Mounting System
- DC/AC Combiner Box
- On Grid Inverter
- DC/AC Cables
- PV Installation Tools

Main Advantages

- Reducing electricity bills
- Easy to installation and maintenance
- Effective utilization of generated power



PROJECT CASES



20KW in Vietnam



500KW in Europe



10KW in Romania



50KW in Lebanon



100KW in Romania

OFF GRID SOLAR SYSTEM

Off-grid solar systems operate from the stored energy in a battery bank. Solar panels are used to keep the battery bank charged. Your off-grid solar system has to be sized properly to meet your daily power needs and replace the stored energy pulled from the battery bank.

The high cost of batteries and inverters means off-grid systems are much more expensive than on-grid systems and so are usually only needed in more remote areas that are far from the electricity grid. However battery costs are reducing rapidly, so there is now a growing market for off-grid solar battery systems in both cities and towns.



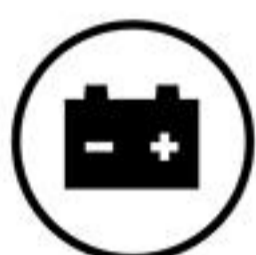
01 Solar Panel

Mono/poly/half cell/flexible/full black solar panel



02 Solar Inverter

Off grid solar inverter



03 Battery Bank

Lithium Battery/GEL Battery



04 Solar Controller

MPPT/PWM Controller



05 PV Cable

Has excellent acid resistance and heat resistance



06 MC4 Connector

Contact material is copper and tin plated



Configuration of PV System

- Solar Panel
- Roof/Ground Mounting System
- DC/AC Combiner Box
- Off Grid Inverter Built in Controller
- Battery Bank, Cable & Rack
- DC/AC Cables
- PV Installation Tools

Main Advantages

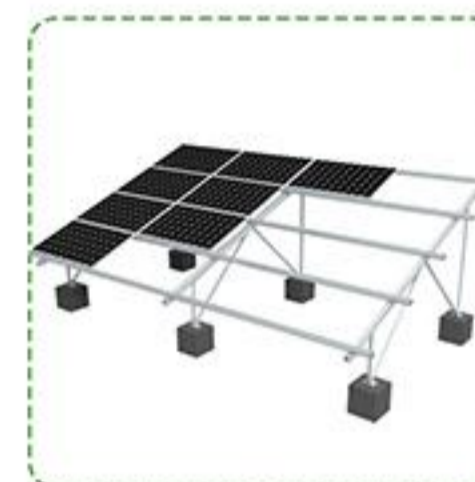
- Reducing electricity bills
- Easy to installation and maintenance
- Effective utilization of generated power

SOLAR ACCESSORIES



Shine Wifi

- > USB port, ShineWifi-X, supports all -X series inverters, including the MAX series
- > Tricolor indicating light (RGB)
- > Reset button underneath
- > QR code
- > Bar codes at the back



Mounting System

- > Residential Roof(Pitched Roof)
- > Commercial Roof(Flat roof&workshop roof)
- > Ground Solar Mounting system
- > Vertical wall solar mounting system
- > All aluminum structure solar mounting system
- > Car parking solar mounting system



MC4 Connector

- > PV Cable 4mm² 6mm²
- > AC Cable
- > DC Switches
- > AC Breaker
- > AC/DC Combine box



PV Cable

- > PV Cable 4mm²/6mm²
- > AC Cable
- > DC Switches
- > AC Breaker
- > AC/DC Combine box



PV Tools

- > Wire Cable Cutter & Stripper
- > MC3 MC4 Crimper
- > MC4 Connectors Assembly
- > Disassembly Tool



DC/AC Combiner Box

- > IP Rating: IP65
- > Rated Voltage: 500vdc/1000vdc/1500vdc
- > Input cable terminal: 4-6mm²



DC/AC Breaker

- > Provide Overcurrent Protection
- > Direct Current Control Circuit Application
- > Automatic Device Against Overload

HYBRID SOLAR SYSTEM

Sunway Hybrid Solar system combine the innovation of both on-grid(grid-tied) and off-grid technologies and are offered as on grid(grid-tie) solar with battery bank storage. Sunway Hybrid Solar Energy Kits generate electricity, not only can be used, also can be stored for night use .What is more, extra energy can be sold back to utility company



3-30KW

☑ Configuration of PV System

- Solar Panel
- Roof/Ground Mounting System
- DC/AC Combiner Box
- Hybrid Inverter/Charge Controller
- Battery Bank, Cable & Rack
- DC/AC Cables
- PV Installation Tools

☑ Main Advantages

- Operate with on-grid and off grid mode at the same time
- Sell energy back to the utility company and store excess energy to night use
- Use on grid energy or solar energy to charge the battery bank

SEVERAL DIFFERENT HYBRID SYSTEMS



1-6KW



3-10KW

PROJECT CASES



10KW in Netherlands



25KW in Vietnam



5KW in Germany



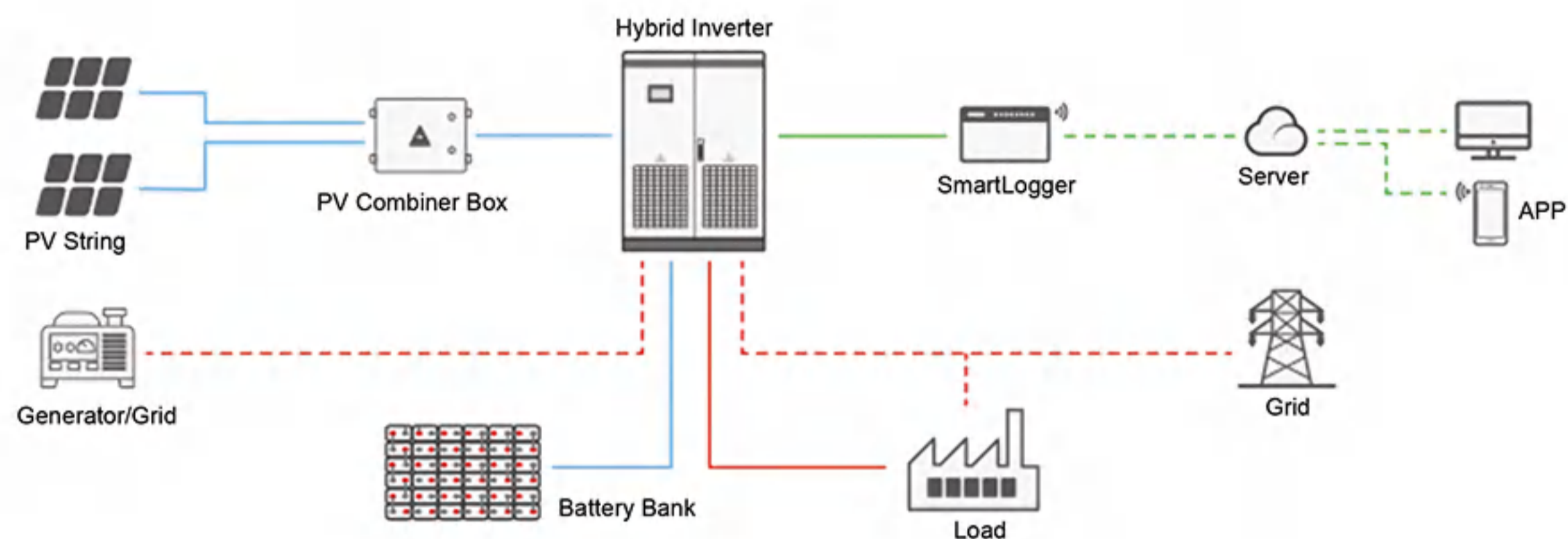
10KW in Spain



150KW in Afghanistan

ENERGY STORAGE SYSTEM(50-300KWH)

Hybrid solar energy storage system, the use of solar panels, power generation, storing electrical energy into the battery, through the inverter in the storage battery DC into household alternating current (AC), can according to the power demand of the average family configuration design, suitable for remote mountainous area electricity is not convenient, simple operation, plug and play, low failure rate, energy conservation, environmental protection, no pollution, no noise.



30-100KW



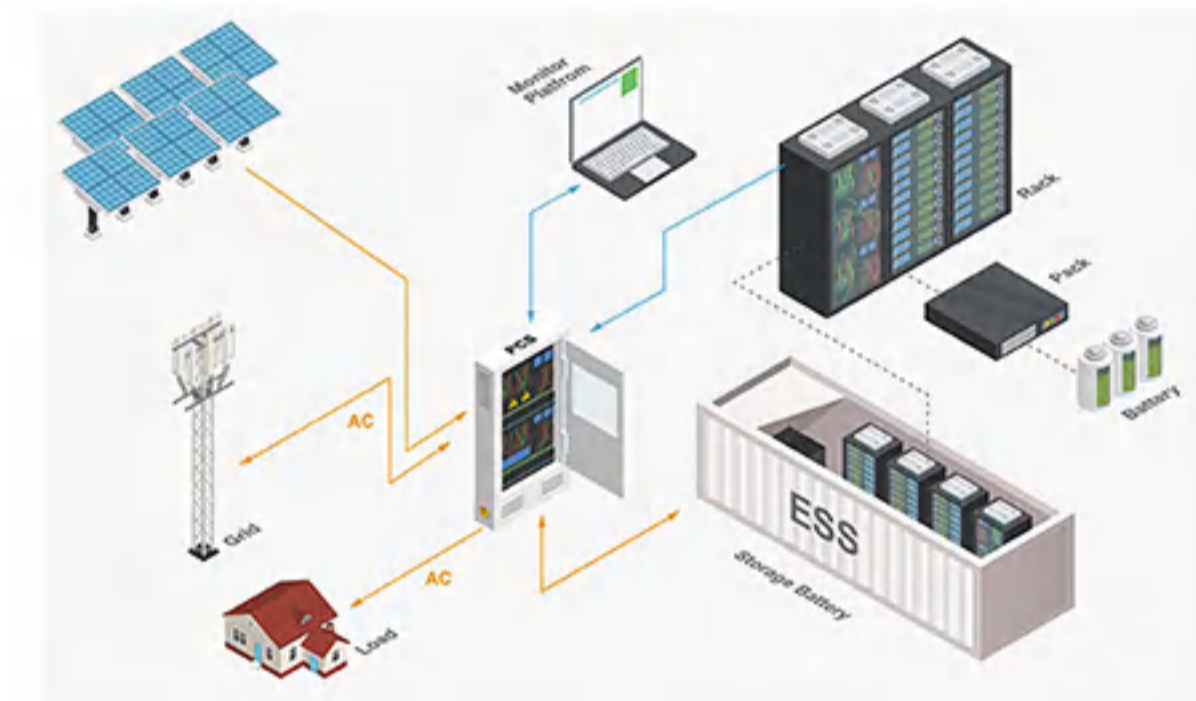
30-150KW

- Pure sine wave AC output
- WIFI/GPRS remote monitoring(optional)
- Compatible to mains voltage or generator power
- Parallel operation available
- Configurable AC solar input priority via LCD setting



CONTAINER ENERGY STORAGE SYSTEM (300-2000KWH)

Sunway battery energy storage system (BESS) containers are based on a modular design. They can be configured to match the required power and capacity requirements of client's application. Our containerised energy storage system (BESS) is the perfect solution for large-scale energy storage projects. The energy storage containers can be used in the integration of various storage technologies and for different purposes.



PERC TECH SOLAR PANEL

The internal structure design of half - piece components includes three ways: series structure, series - parallel structure and parallel - series structure.



01 High customer value

- Lower LCOE (Levelized Cost Of Energy), reduced BOS (Balance of System) cost, shorter payback time
- Lowest guaranteed first year and annual degradation

02 High power

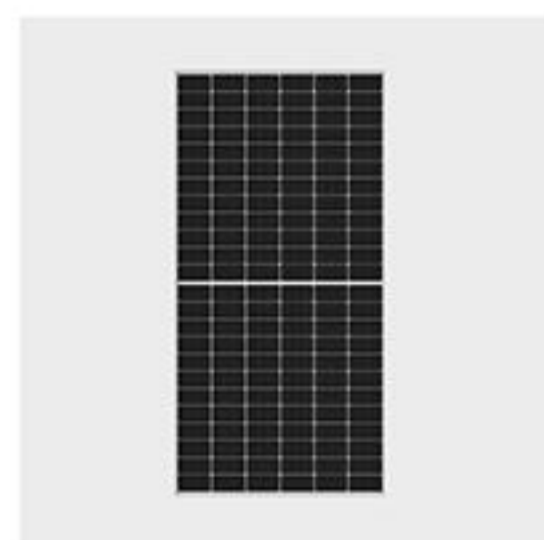
- High module efficiency with high density interconnect technology

03 High reliability

- Minimized micro-cracks with innovative non-destructive cutting technology

04 High energy yield

- Excellent IAM (Incident Angle Modifier) and low irradiation performance, validated by 3rd party certifications



GLASS

- Anti-reflective glass
- High-transmittance and low reflection
- Increase model efficiency
- High mechanical strength



CELL

- High PID resistant
- Low breakage rate
- Uniform color
- High Efficiency PV Cells



FRAME

- Optional silvery or black frame
- Tensile Strength Frame
- Boost bearing capability and prolong service life



JUNCTION BOX

- Waterproofness Junction Box
- IP67 protection level
- Quality diode ensures module running safety
- Heat dissipation

HOT SELLING SOLAR PANEL

425 W

108CELLS

Size: 1722*1134*30/35mm
Weight: 22kg

420 W

108CELLS

Size: 1722*1134*30mm
Weight: 21.8kg

460 W

120CELLS

Size: 1909*1134*30mm
Weight: 24.3kg

500 W

132CELLS

Size: 2094*1134*35mm
Weight: 26kg

550 W

144CELLS

Size: 2279*1134*35mm
Weight: 29kg

HOT SALE!

560 W

144CELLS

Size: 2279*1134*35mm
Weight: 32kg

600 W

120CELLS

Size: 2172*1303*35mm
Weight: 31.5kg

670 W

132CELLS

Size: 2384*1303*35mm
Weight: 34.5kg

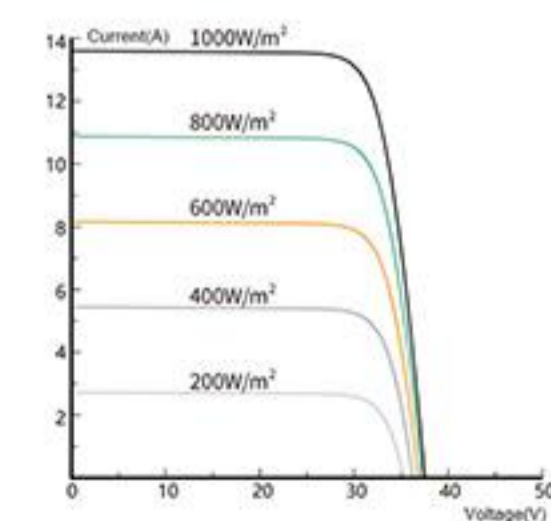
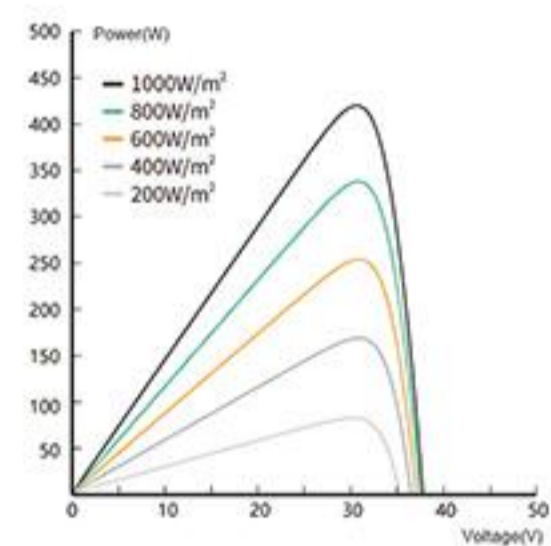
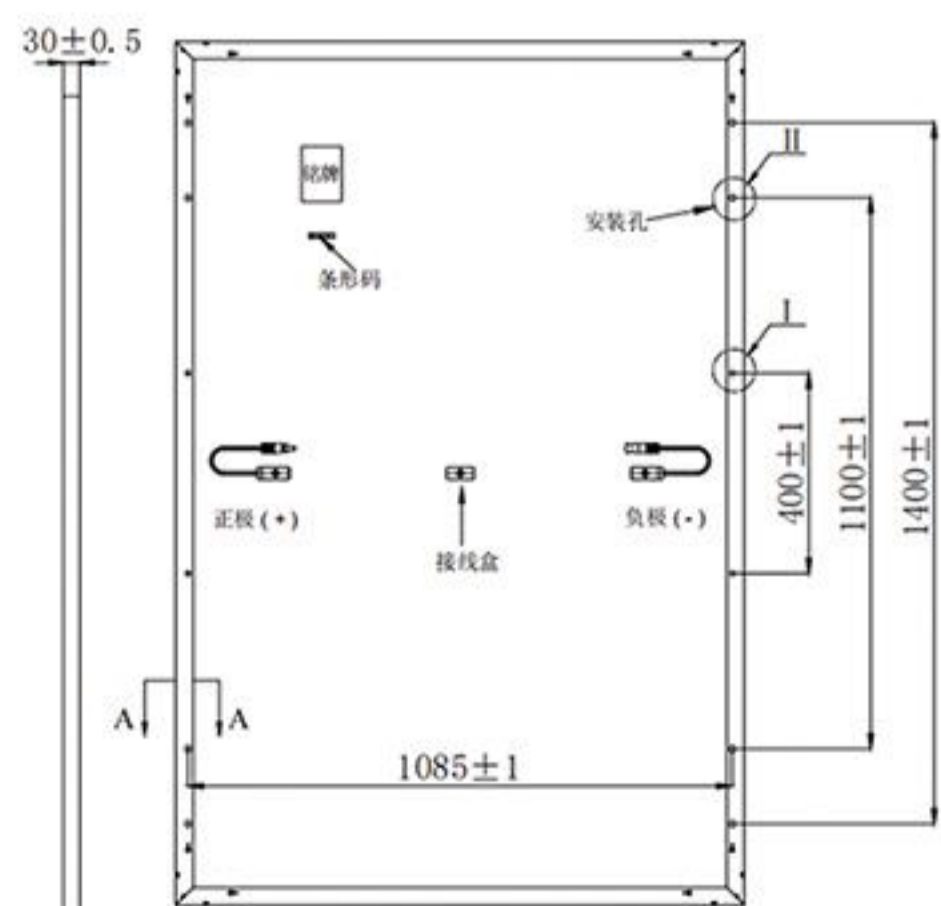
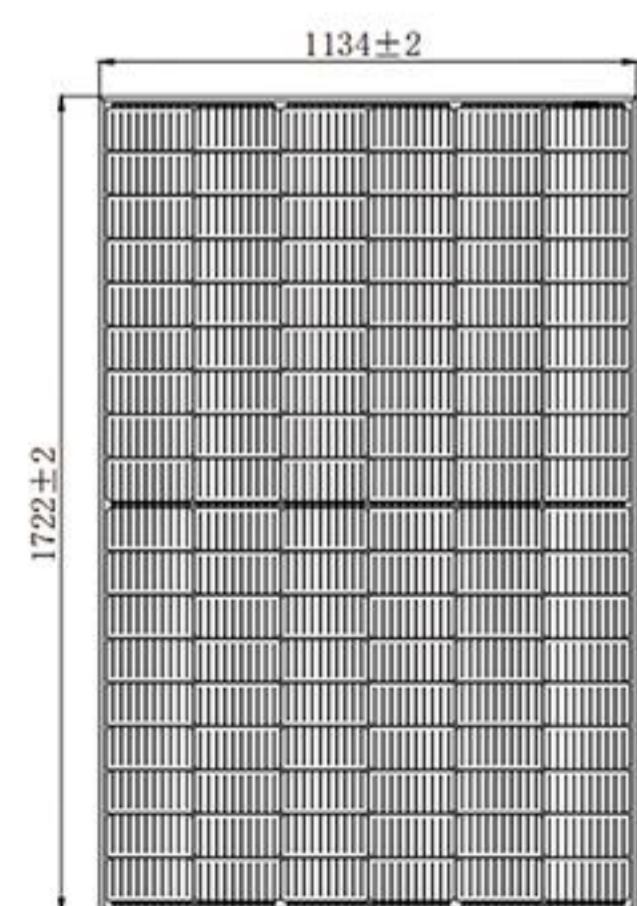


SW425M-108

Cell	Mono 182*91mm
Weight	22kg
Size	1722*1134*30mm
No.of Cells	108(6*18)
Junction Box	IP68
Maximum System Voltage	DC1000V/1500V
Maximum Series Fuse	25A
Moduels Per Pallet	36Pcs
Moduels Per 40HQ	936Pcs

ELECTRICAL PARAMETERS

Module	SW405M-108 ~ SW425M-108				
Encapsulation	Class/Eva/Cell/Eva/Backsheet				
Maximum Power Pmax (W)	405	410	415	420	425
Maximum Power Voltage (Vmp/V)	31.15	31.30	31.45	31.60	31.90
Maximum Power Current (Imp/A)	13.01	13.10	13.20	13.30	13.33
Open Circuit Voltage (Voc/V)	37.11	37.26	37.41	37.56	37.96
Short Circuit Current (Isc/A)	13.70	13.79	13.89	13.98	14.08
Module Efficiency (%)	20.74	21.00	21.25	21.51	22.10

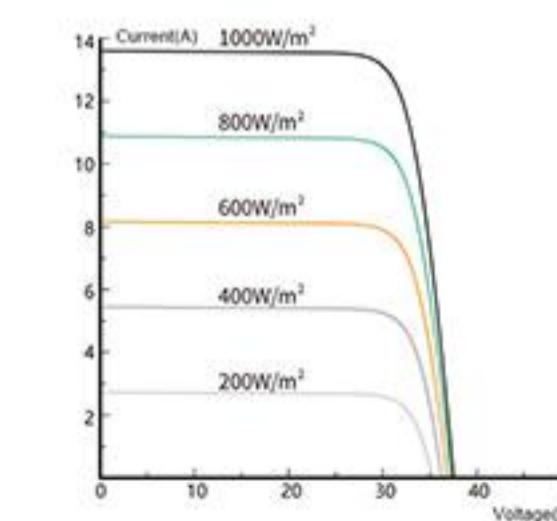
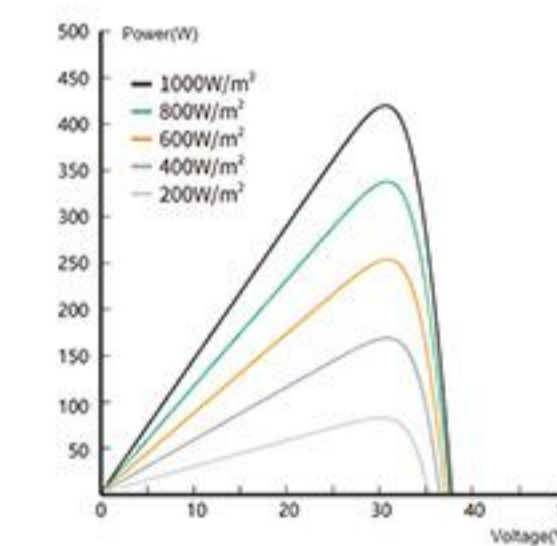
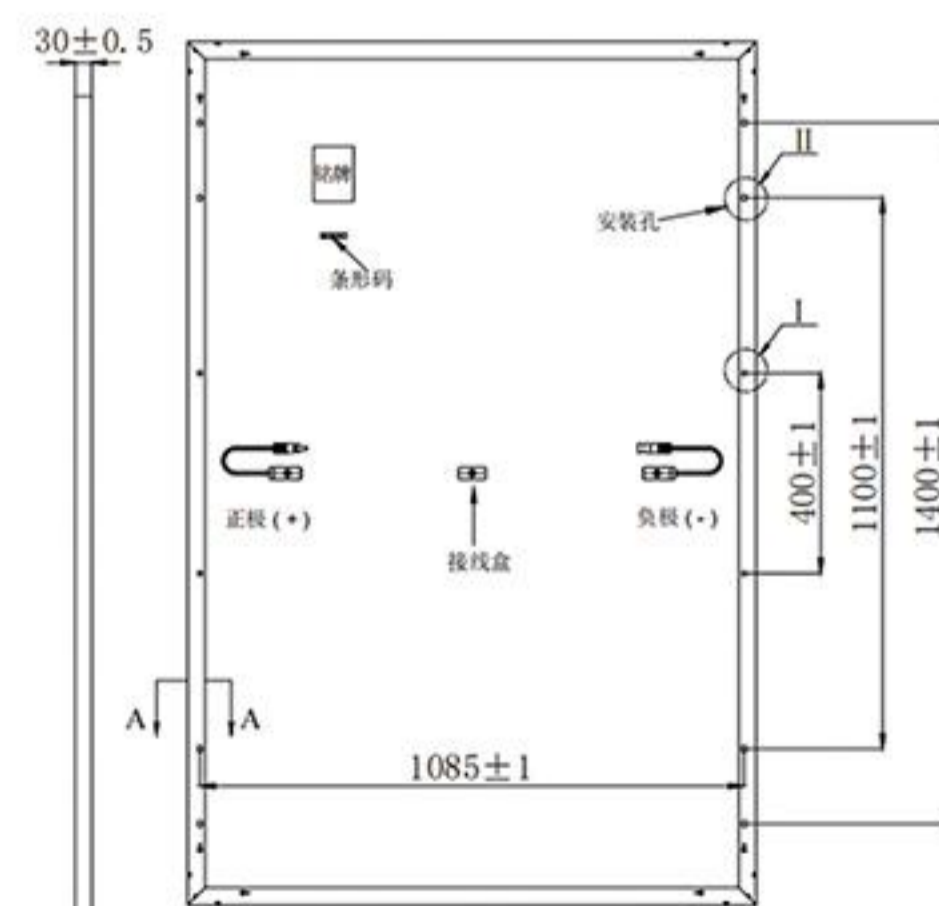
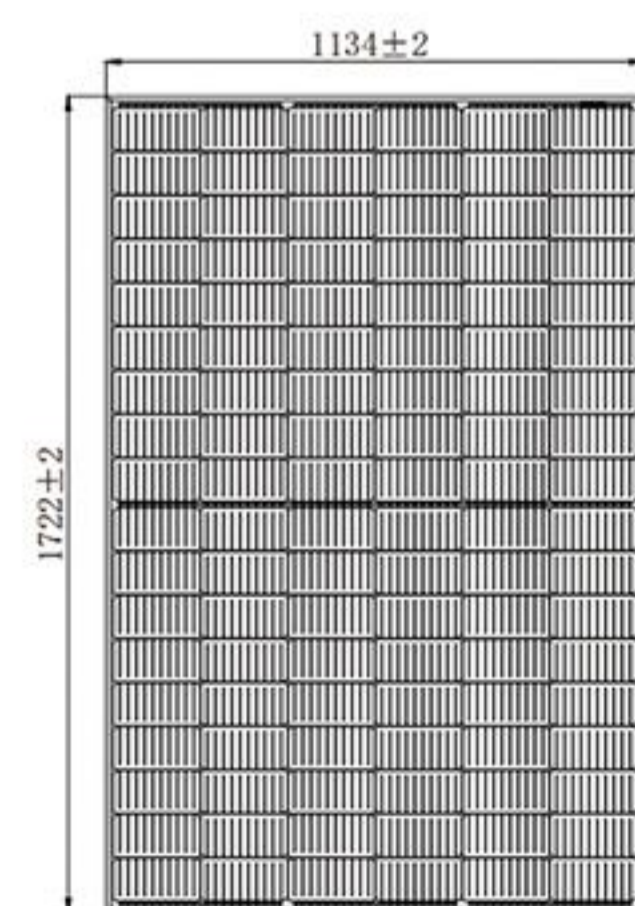


SW420M-108

Cell	Full Black Mono 182*91mm
Weight	21.8kg
Size	1722*1134*30mm
No.of Cells	108(6*18)
Junction Box	IP68
Maximum System Voltage	DC1000V/1500V(IEC)
Maximum Series Fuse	25A
Moduels Per Pallet	36Pcs
Moduels Per 40HQ	936Pcs

ELECTRICAL PARAMETERS

Module	SW400M-108 ~ SW420M-108				
Encapsulation	Class/Eva/Cell/Eva/Backsheet				
Maximum Power Pmax (W)	400	405	410	415	420
Maximum Power Voltage (Vmp/V)	31.00	31.15	31.30	31.45	31.60
Maximum Power Current (Imp/A)	12.91	13.01	13.10	13.20	13.30
Open Circuit Voltage (Voc/V)	36.96	37.11	37.26	37.41	37.56
Short Circuit Current (Isc/A)	13.60	13.70	13.79	13.89	13.98
Module Efficiency (%)	20.48	20.74	21.00	21.25	21.51



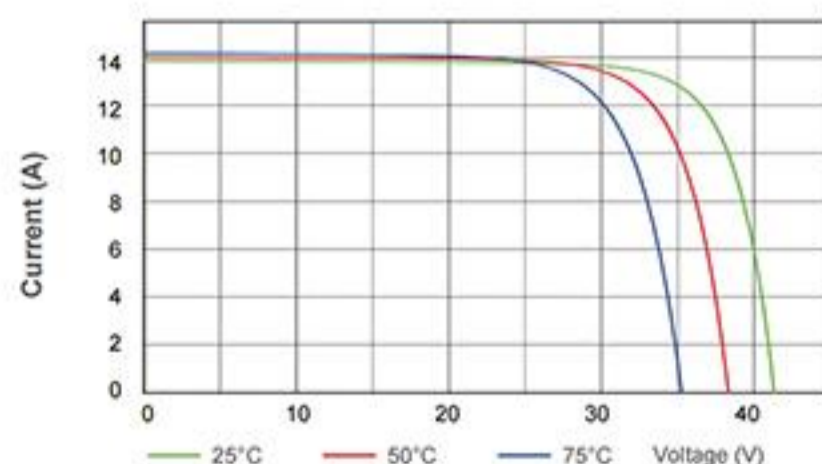
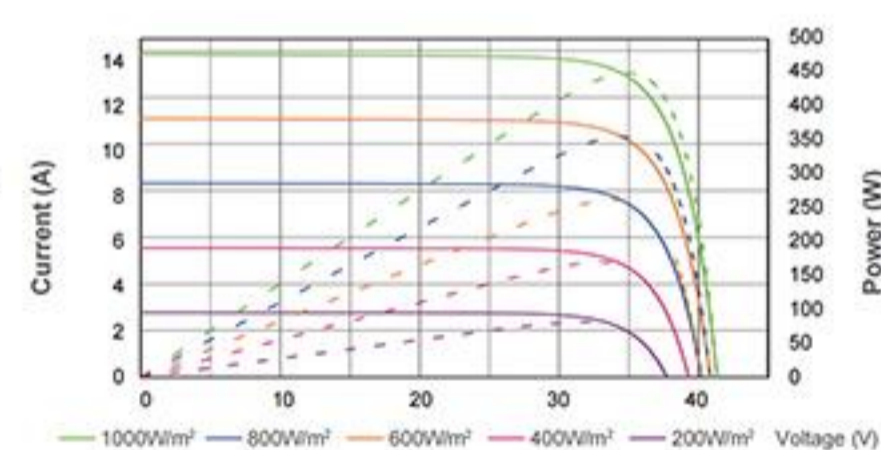
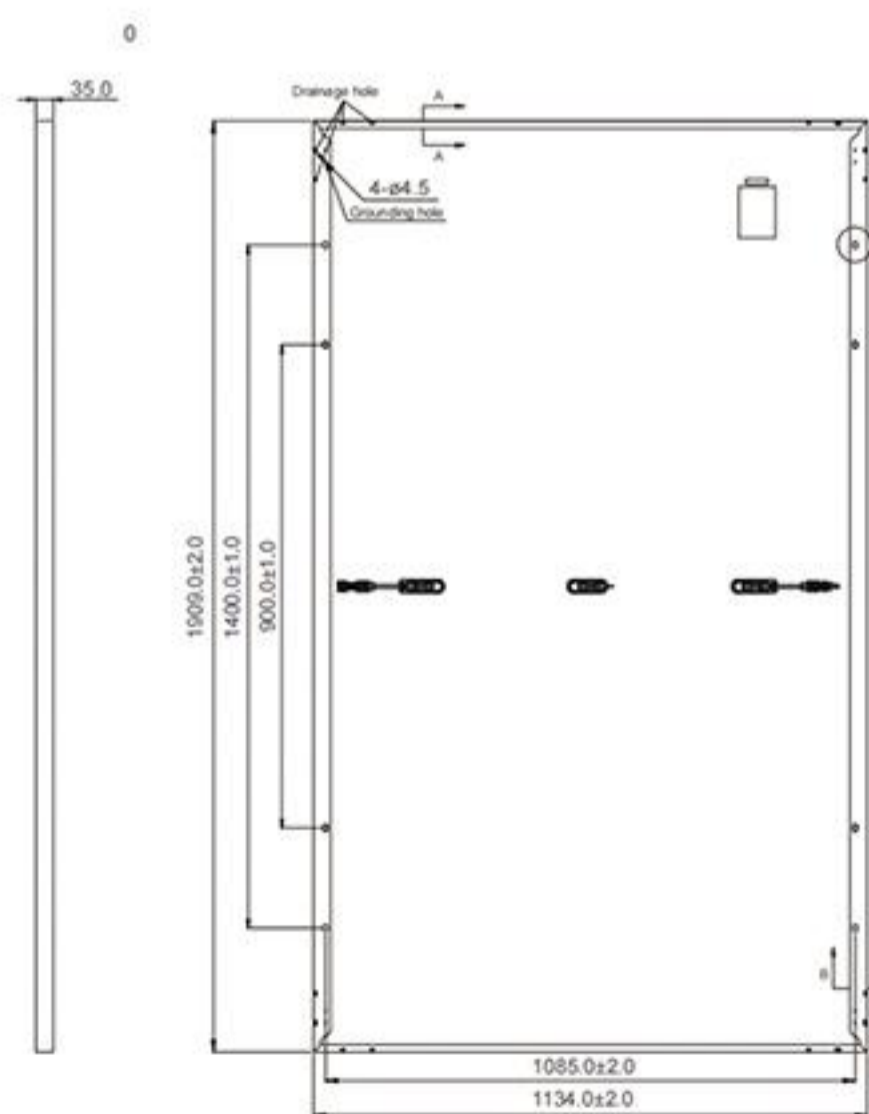
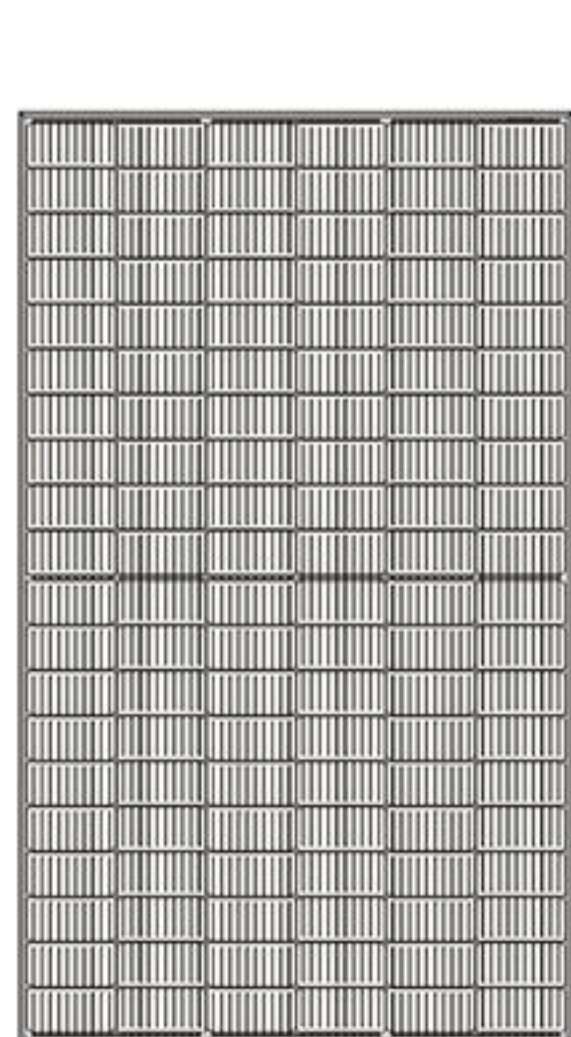


SW460M-120

Cell	Mono 182*91mm
Weight	24.3kg
Size	1909*1134*30mm
No.of Cells	144(6*24)
Junction Box	IP68
Maximum System Voltage	DC1000V/1500V(IEC)
Maximum Series Fuse	25A
Moduels Per Pallet	36Pcs
Moduels Per 40HQ	864Pcs

ELECTRICAL PARAMETERS

Module	SW440M-120 ~ SW460M-120				
Encapsulation	Class/Eva/Cell/Eva/Backsheet				
Maximum Power Pmax (W)	440	445	450	455	460
Maximum Power Voltage (Vmp/V)	34.40	34.50	34.70	34.90	35.05
Maximum Power Current (Imp/A)	12.81	12.89	12.97	13.05	13.13
Open Circuit Voltage (Voc/V)	41.00	41.20	41.30	41.50	41.70
Short Circuit Current (Isc/A)	13.69	13.78	13.86	13.94	14.02
Module Efficiency (%)	20.40	20.60	20.90	21.10	21.30

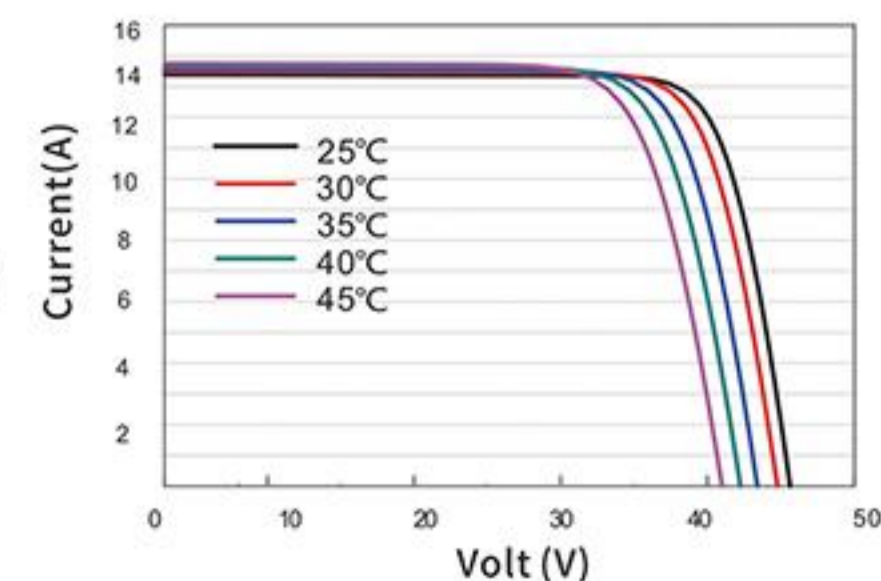
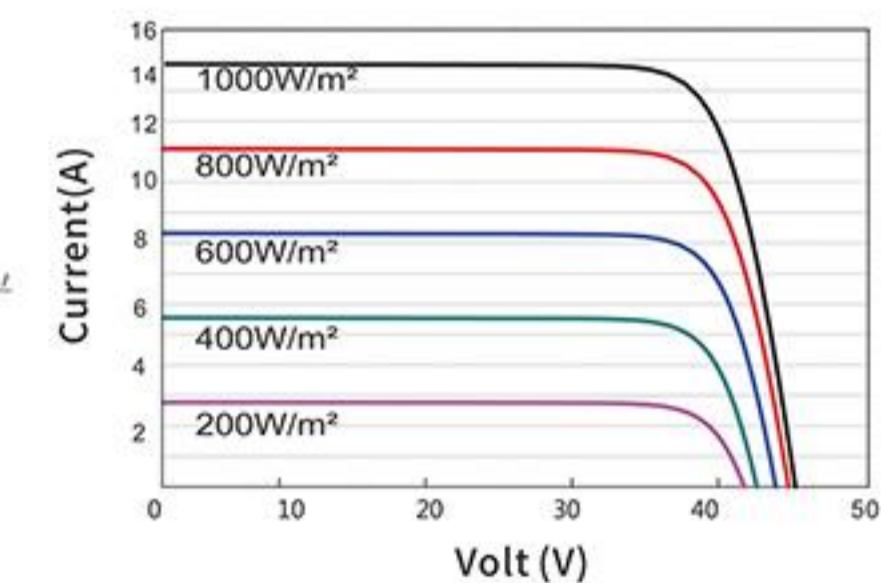
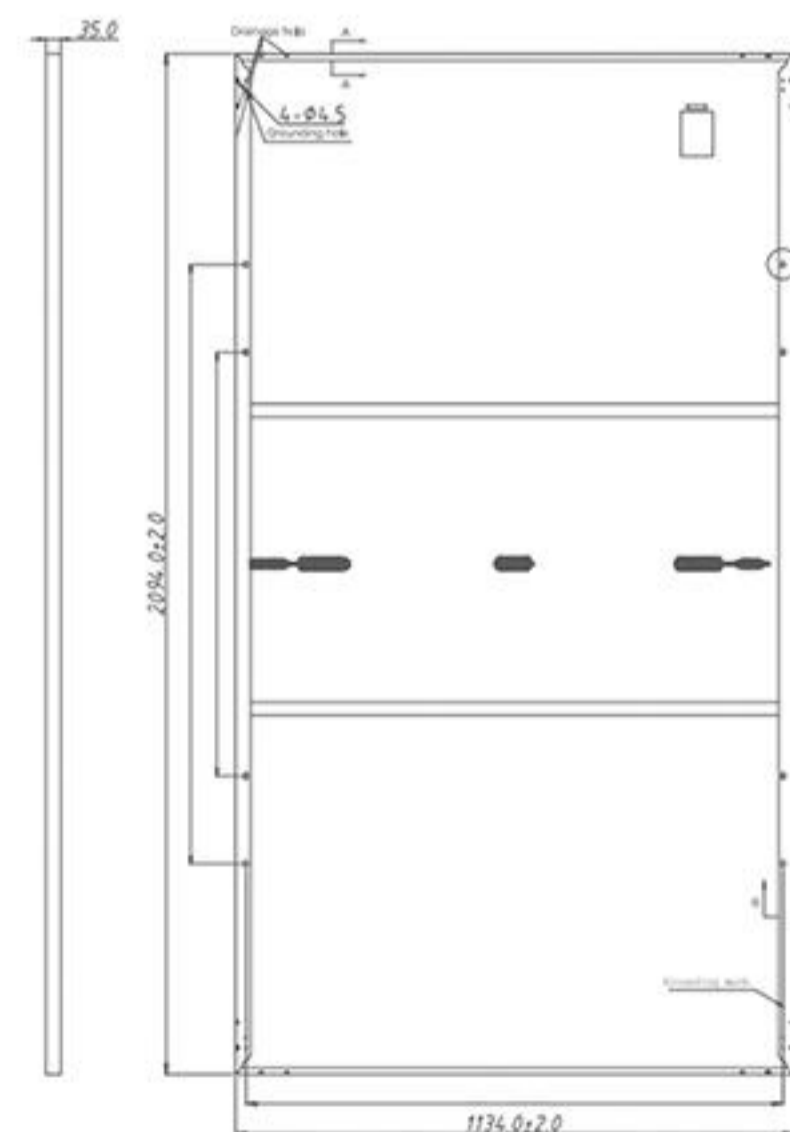
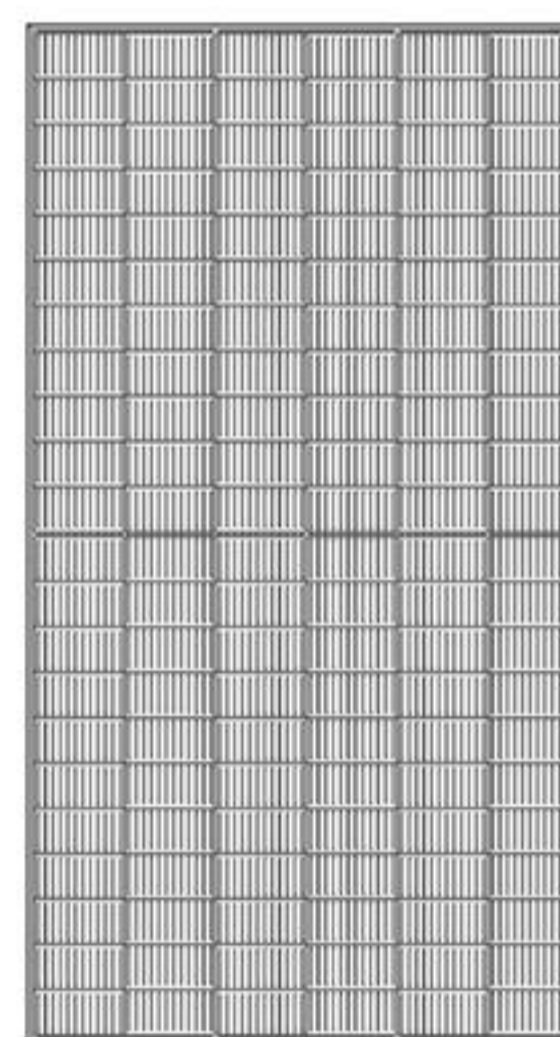


SW500M-132

Cell	Mono 182*91mm
Weight	26kg
Size	2094*1134*35mm
No.of Cells	132(6*22)
Junction Box	IP68
Maximum System Voltage	DC 1500V(IEC)
Maximum Series Fuse	25A
Moduels Per Pallet	31Pcs
Moduels Per 40HQ	682Pcs

ELECTRICAL PARAMETERS

Module	SW485M-132 ~ SW505M-132				
Encapsulation	Class/Eva/Cell/Eva/Backsheet				
Maximum Power Pmax (W)	485	490	495	500	505
Maximum Power Voltage (Vmp/V)	38.00	38.15	38.30	38.45	38.60
Maximum Power Current (Imp/A)	12.77	12.85	12.93	13.01	13.09
Open Circuit Voltage (Voc/V)	45.20	45.35	45.50	45.65	45.80
Short Circuit Current (Isc/A)	13.68	13.76	13.83	13.91	13.98
Module Efficiency (%)	20.42	20.64	20.85	21.06	21.27



550W



SW550M-144

Cell	Mono 182*91mm
Weight	29kg
Size	2279*1134*35mm
No.of Cells	144(6*24)
Junction Box	IP68
Maximum System Voltage	DC1000V/1500V(IEC)
Maximum Series Fuse	25A
Moduels Per Pallet	31Pcs
Moduels Per 40HQ	620Pcs

560W

SW560M-144-BIFACIAL

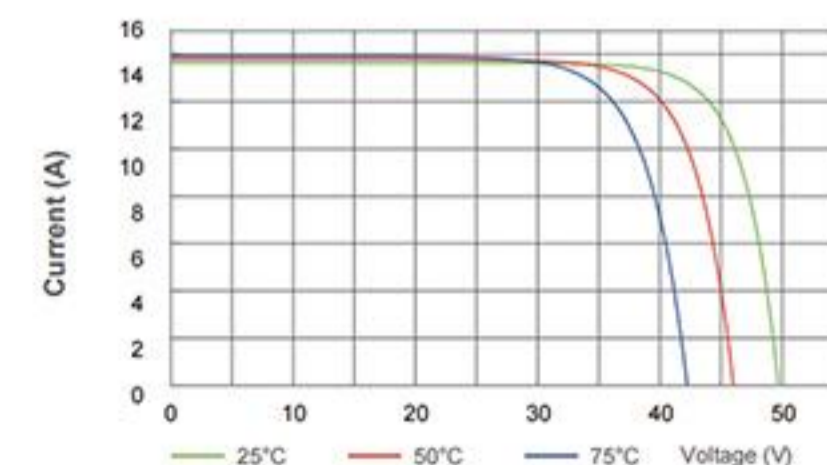
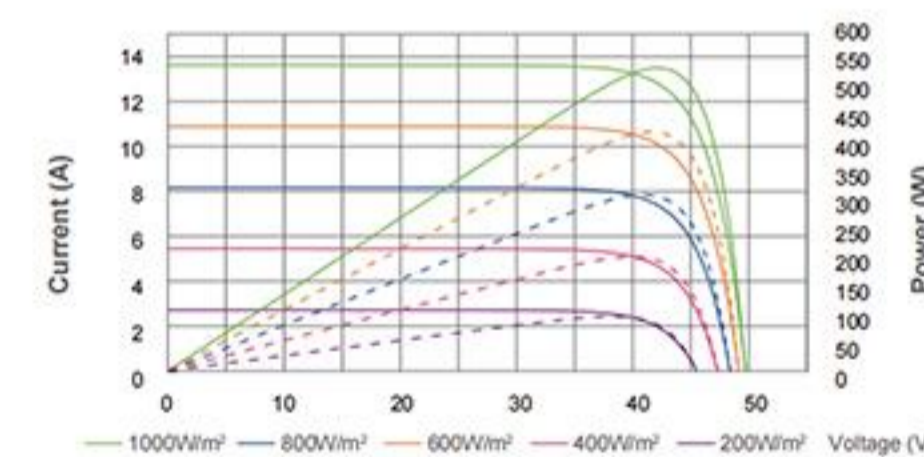
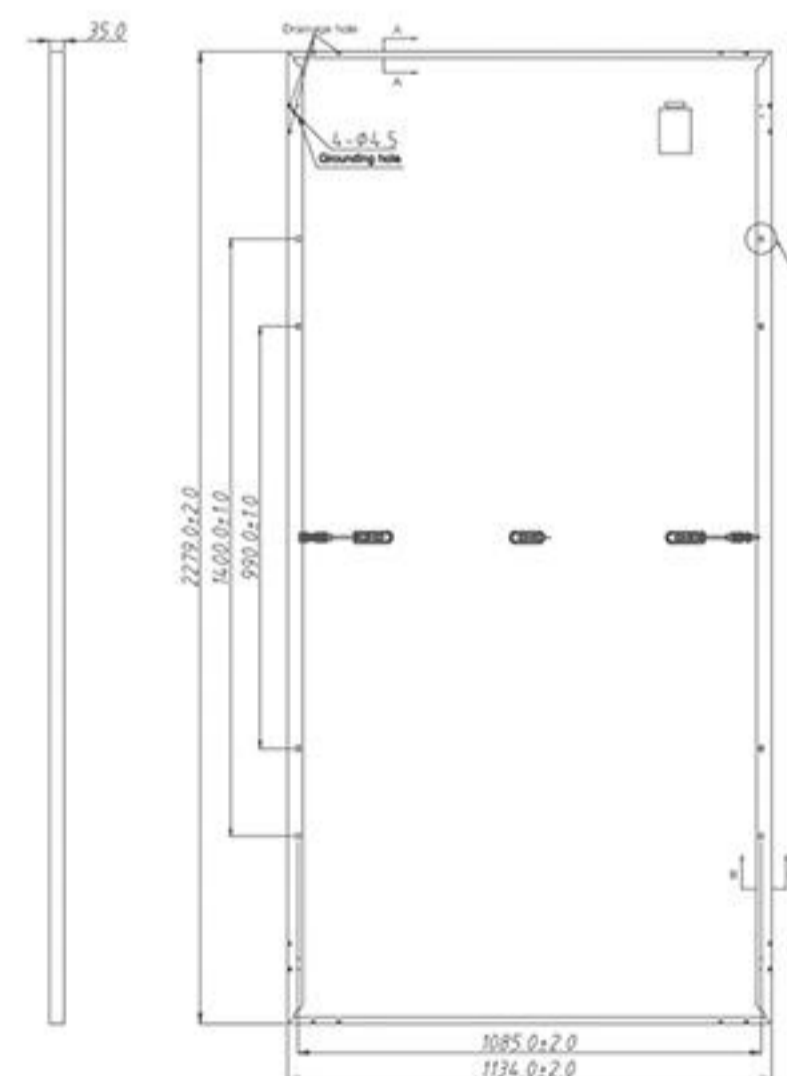
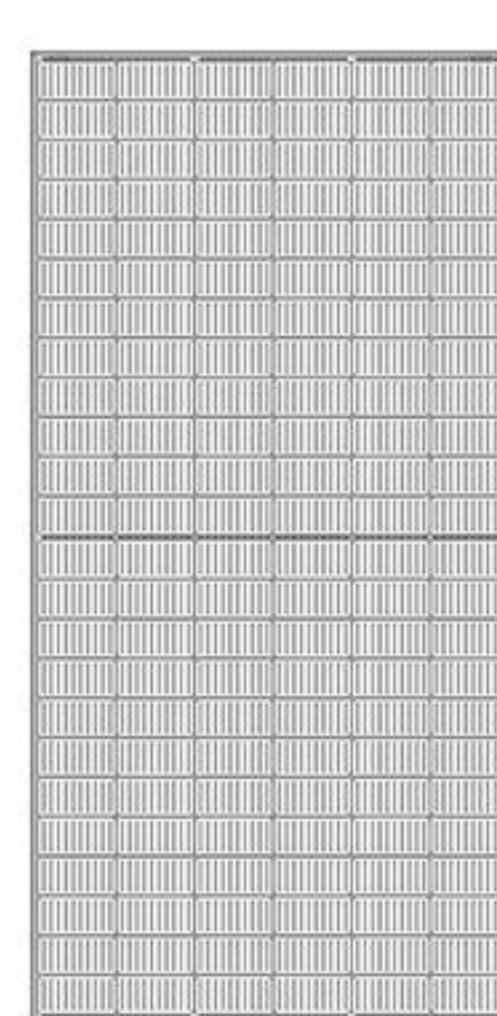
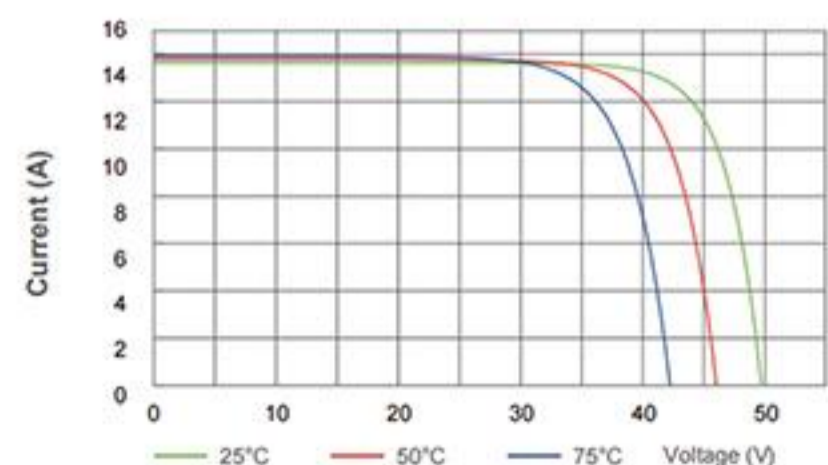
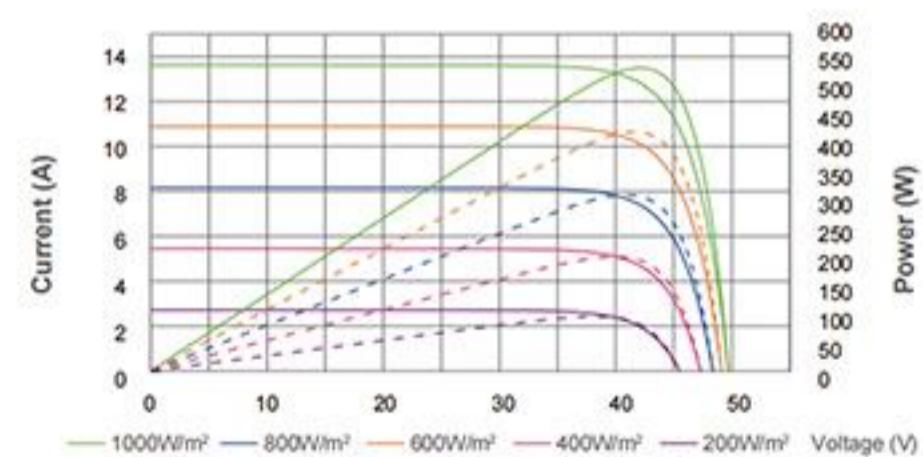
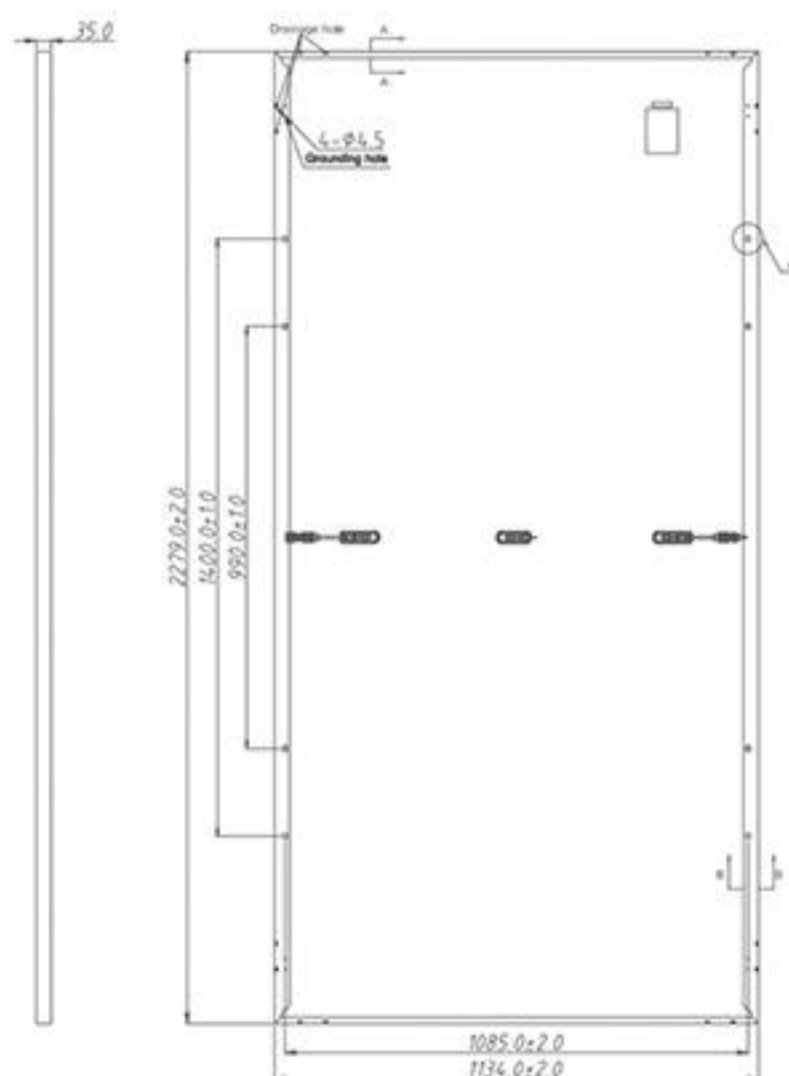
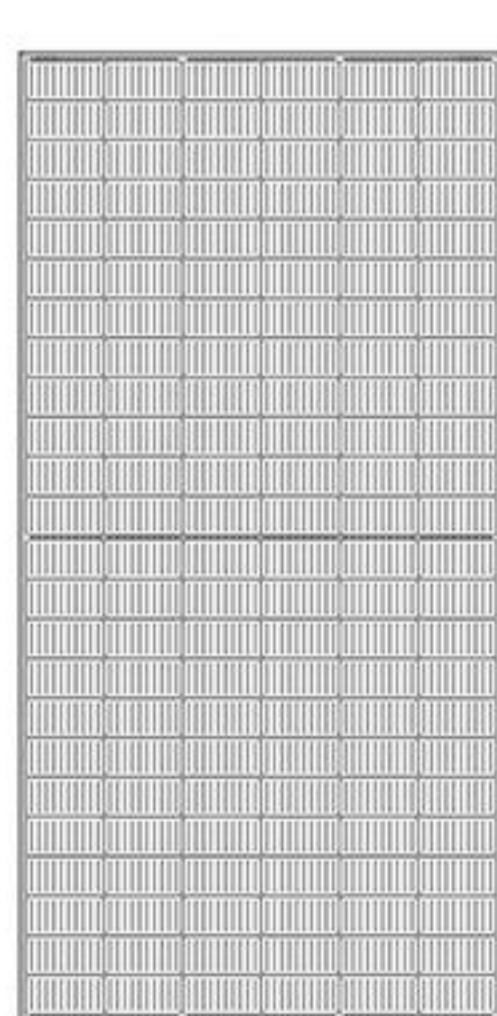
Cell	Mono 182*91mm
Weight	32kg
Size	2279*1134*35mm
No.of Cells	144(6*24)
Junction Box	IP68
Maximum System Voltage	DC 1500V(IEC)
Maximum Series Fuse	25A
Moduels Per Pallet	31Pcs
Moduels Per 40HQ	620Pcs

ELECTRICAL PARAMETERS

Module	SW530M-144 ~ SW560M-144				
Encapsulation	Class/Eva/Cell/Eva/Backsheet				
Maximum Power Pmax (W)	530	535	540	550	560
Maximum Power Voltage (Vmp/V)	41.70	41.80	41.90	42.10	42.30
Maximum Power Current (Imp/A)	12.71	12.80	12.89	13.07	13.25
Open Circuit Voltage (Voc/V)	49.50	49.60	49.70	49.90	51.20
Short Circuit Current (Isc/A)	13.44	13.53	13.62	13.80	13.98
Module Efficiency (%)	20.50	20.70	20.90	21.30	21.67

ELECTRICAL PARAMETERS

Module	SW535M-144 ~ SW560M-144				
Encapsulation	Class/Eva/Cell/Eva/Backsheet				
Maximum Power Pmax (W)	535	540	545	550	560
Maximum Power Voltage (Vmp/V)	41.60	41.80	41.90	42.10	42.40
Maximum Power Current (Imp/A)	12.87	12.94	13.02	13.08	13.21
Open Circuit Voltage (Voc/V)	49.40	49.50	49.70	49.90	50.20
Short Circuit Current (Isc/A)	13.83	13.89	13.96	14.01	14.13
Module Efficiency (%)	20.70	20.90	21.10	21.30	21.66



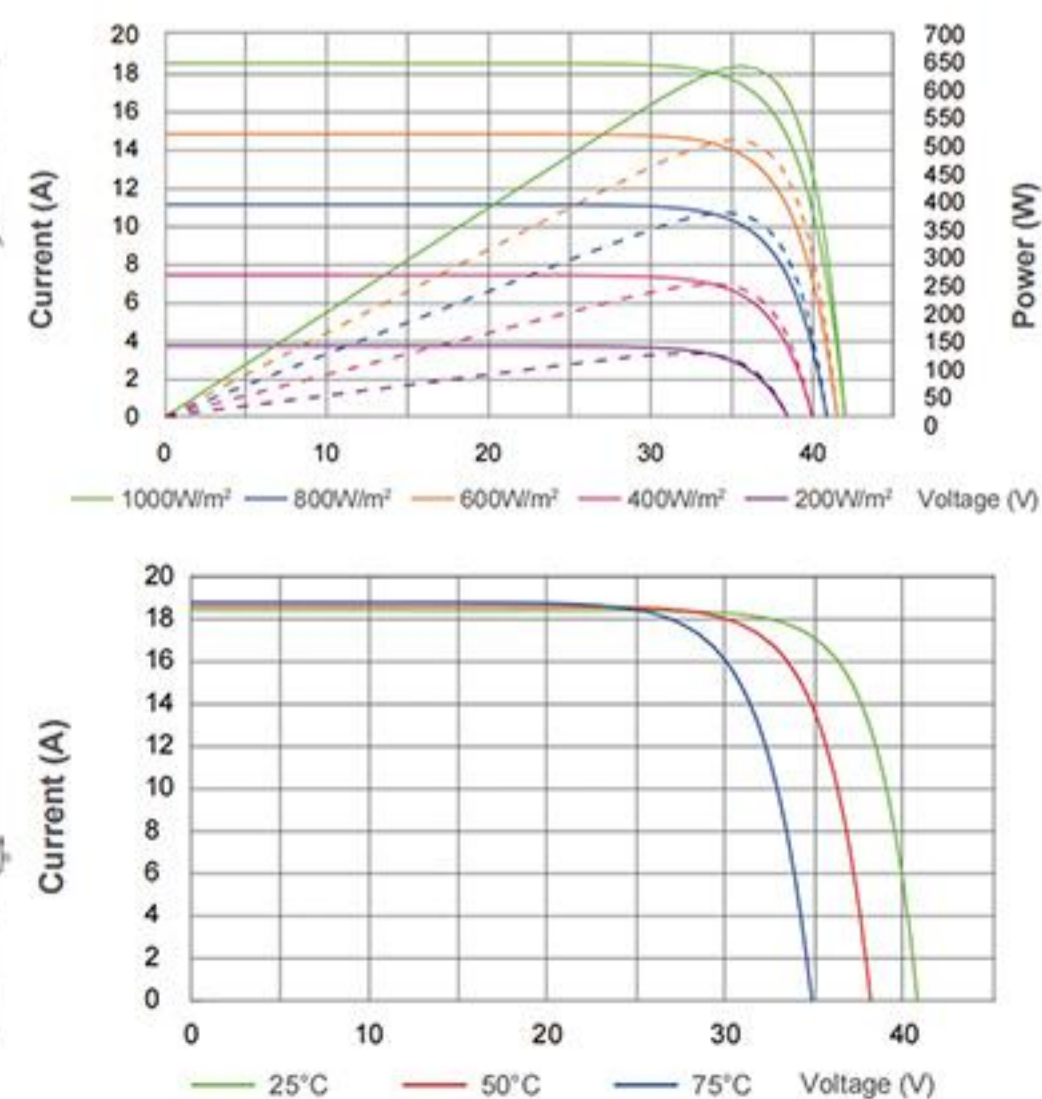
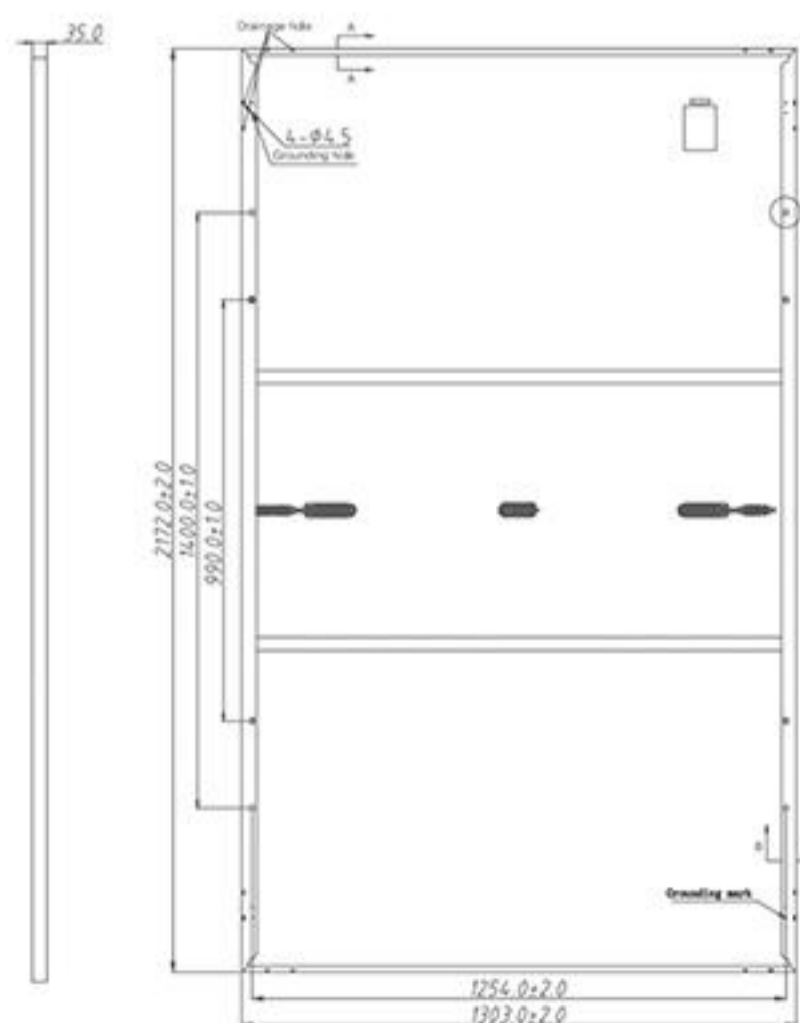
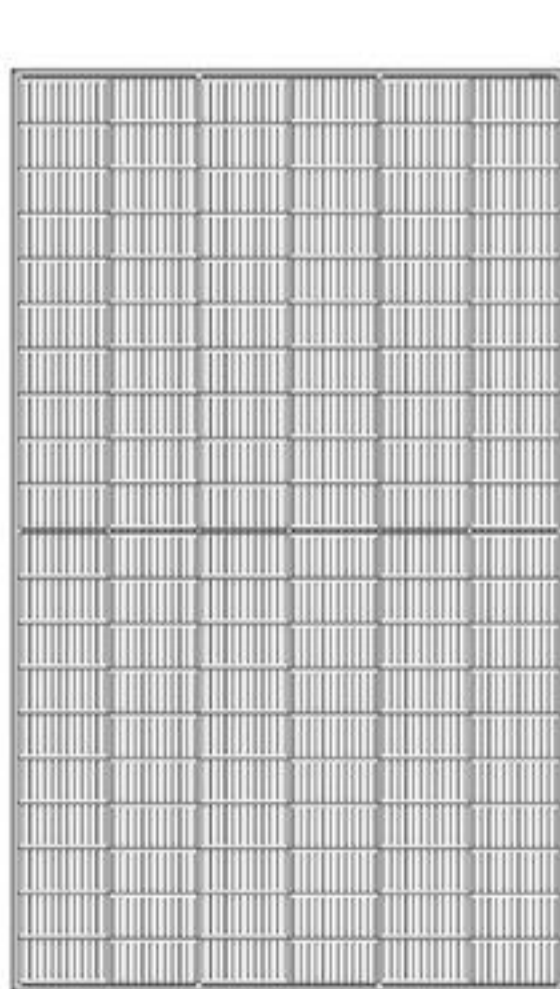


SW600M-120

Cell	Mono 210*105mm
Weight	31.5kg
Size	2172*1303*35mm
No.of Cells	120(6*20)
Junction Box	IP68
Maximum System Voltage	DC1000V/1500V(IEC)
Maximum Series Fuse	30A
Moduels Per Pallet	31Pcs
Moduels Per 40HQ	558Pcs

ELECTRICAL PARAMETERS

Module	SW585M-120 ~ SW605M-120				
Encapsulation	Class/Eva/Cell/Eva/Backsheet				
Maximum Power Pmax (W)	585	590	595	600	605
Maximum Power Voltage (Vmp/V)	34.10	34.30	34.50	34.70	34.90
Maximum Power Current (Imp/A)	17.19	17.23	17.28	17.32	17.34
Open Circuit Voltage (Voc/V)	41.30	41.50	41.70	41.90	42.10
Short Circuit Current (Isc/A)	18.18	18.22	18.27	18.31	18.40
Module Efficiency (%)	20.70	20.80	21.00	21.20	21.40

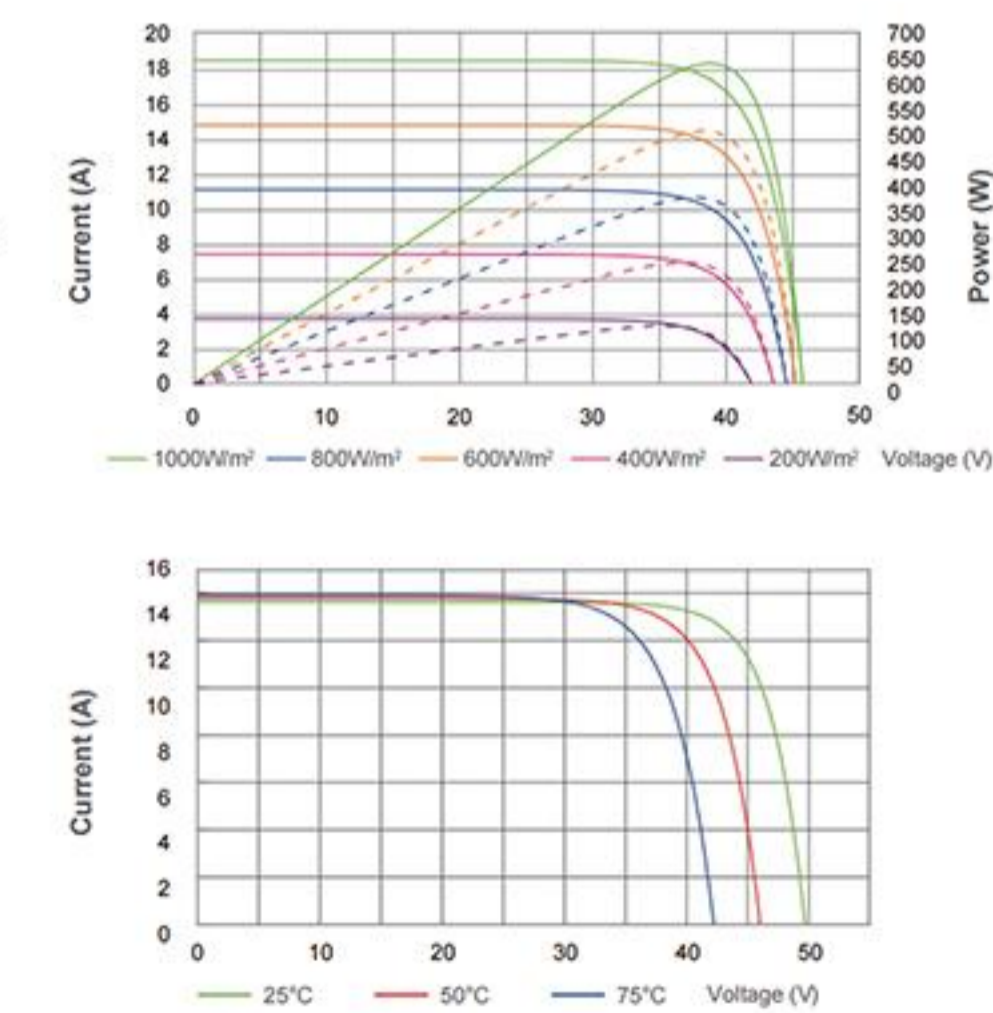
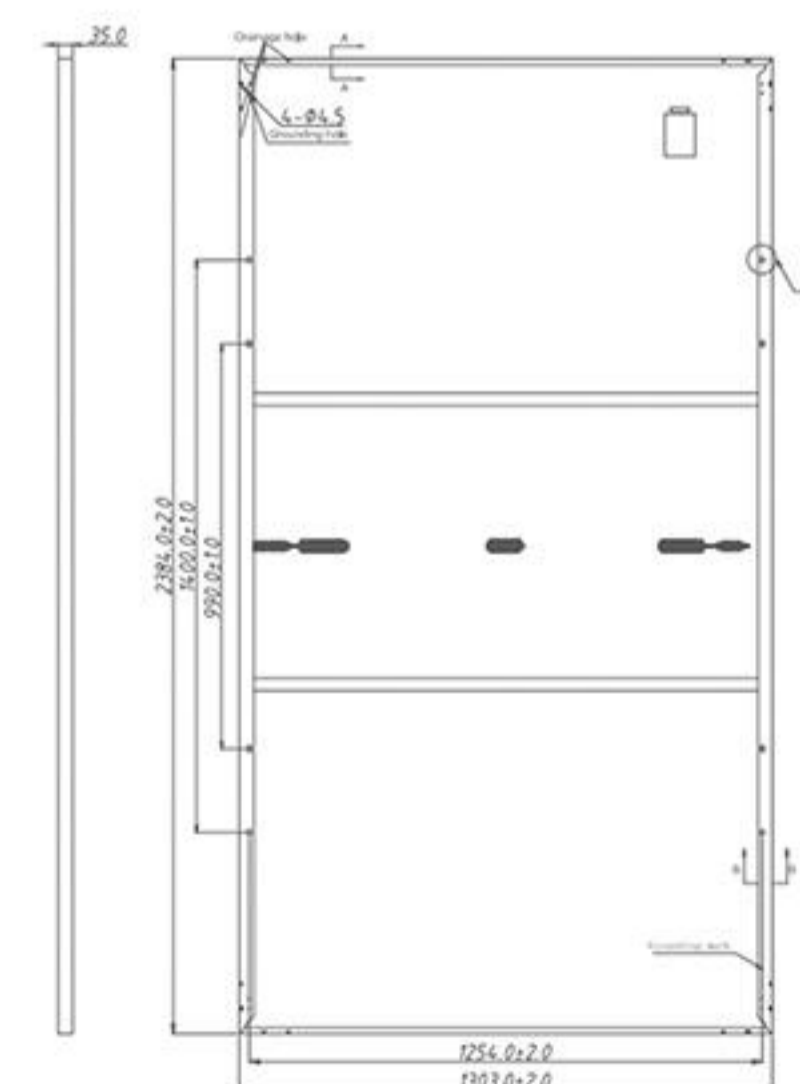
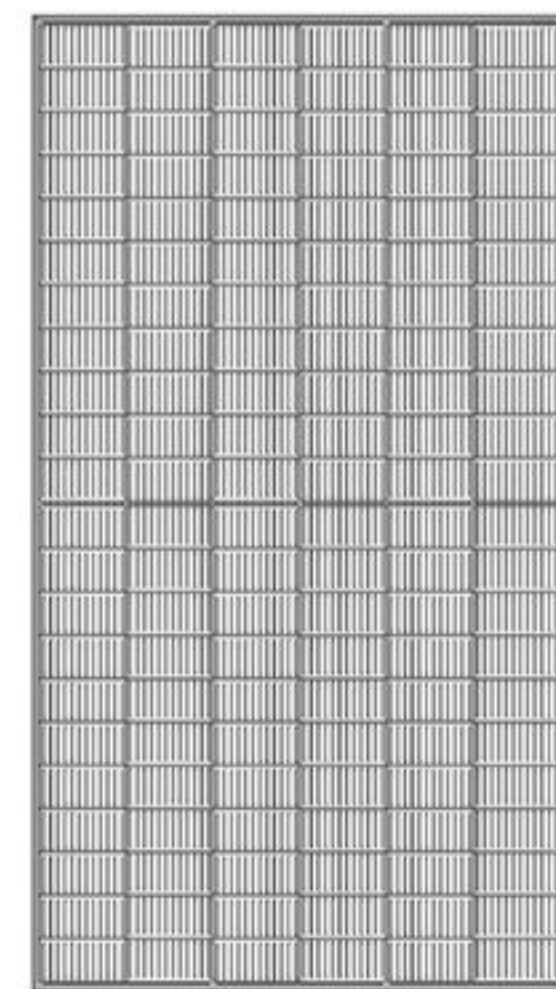


SW670M-132

Cell	Mono 210*105mm
Weight	34.5kg
Size	2384*1303*35mm
No.of Cells	132(6*22)
Junction Box	IP68
Maximum System Voltage	DC1000V/1500V(IEC)
Maximum Series Fuse	30A
Moduels Per Pallet	31Pcs
Moduels Per 40HQ	558Pcs

ELECTRICAL PARAMETERS

Module	SW650M-132 ~ SW670M-132				
Encapsulation	Class/Eva/Cell/Eva/Backsheet				
Maximum Power Pmax (W)	650	655	660	665	670
Maximum Power Voltage (Vmp/V)	37.80	38.00	38.20	38.40	38.60
Maximum Power Current (Imp/A)	17.20	17.24	17.28	17.32	17.36
Open Circuit Voltage (Voc/V)	45.20	45.40	45.60	45.80	46.00
Short Circuit Current (Isc/A)	18.26	18.30	18.34	18.38	18.42
Module Efficiency (%)	20.90	21.10	21.30	21.40	21.60



N TYPE TOPCON SOLAR PANEL

The N Type TOPcon cell is designed with conductive TCO surface and insulation-free layer, so there is no build-up surface layer charge. Compared to PERC module, N Type TOPcon features lower power temperature coefficient and higher output power. It is about 4.9% more efficient in power output than PERC module under 60°C operation temperature. The effective power generation time of N Type TOPcon is 11.07% more than the effective power generation time of conventional cells.



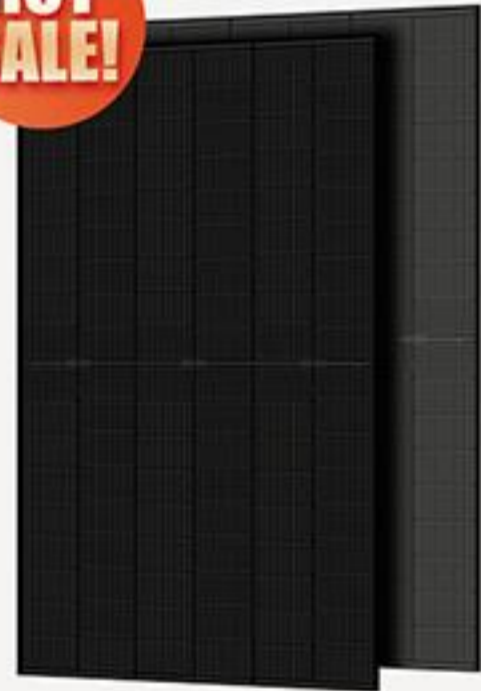
PID
Fire class A
harsh environment adaptability



30 years
power warranty

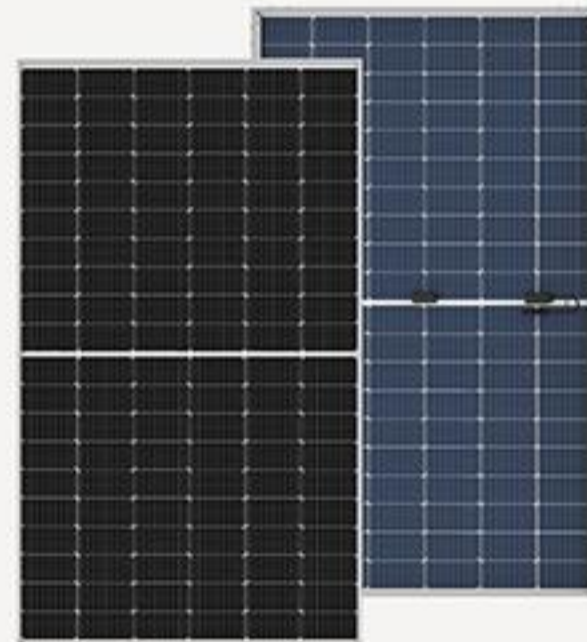


Elegant appearance
and high performance



415~440W

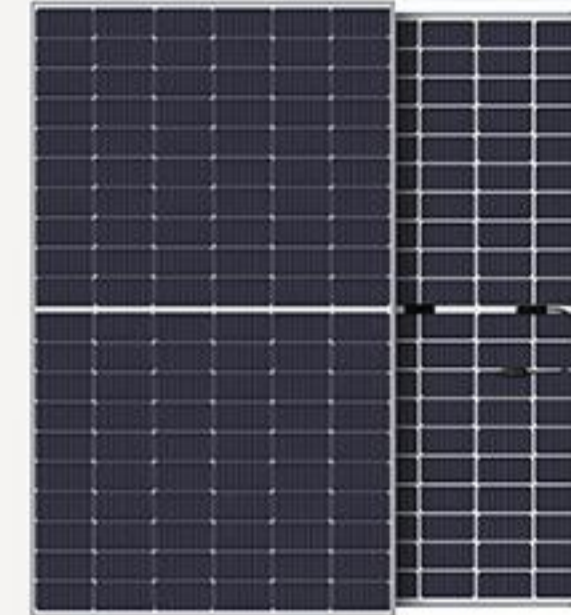
Cell: 108cells
Weight: 24.5kg
Size: 1722*1134*30mm



465~490W

Cell: 120cells
Weight: 24.2kg
Size: 1903*1134*30mm

HJT SOLAR PANEL



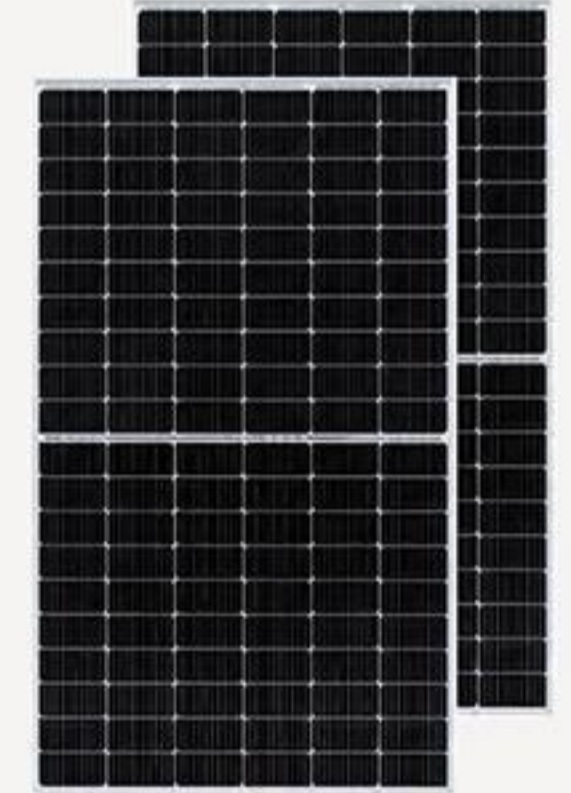
385~405W

Cell: 120cells
Weight: 22.8kg
Size: 1755*1038*30mm



420~445W

Cell: 108cells
Weight: 23kg
Size: 1722*1134*30mm



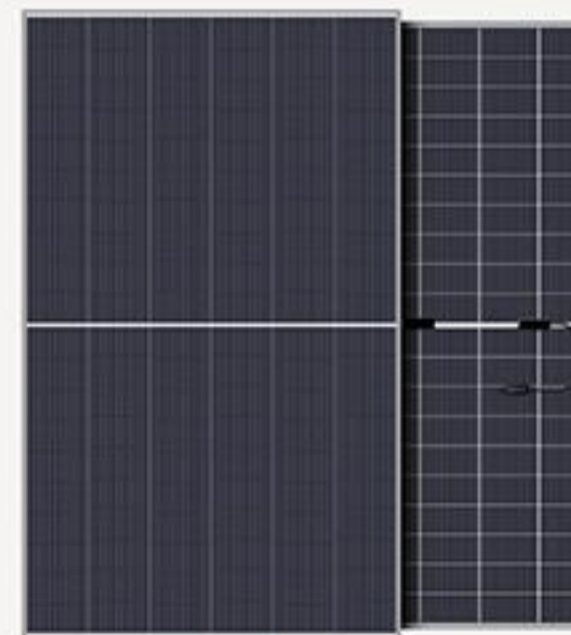
470~500W

Cell: 120cells
Weight: 26.4kg
Size: 1914*1134*30mm



570~595W

Cell: 144cells
Weight: 32.3kg
Size: 2278*1134*30mm



620~640W

Cell: 120cells
Weight: 34.9kg
Size: 2172*1303*35mm



700~730W

Cell: 132cells
Weight: 38.3kg
Size: 2384*1303*33mm

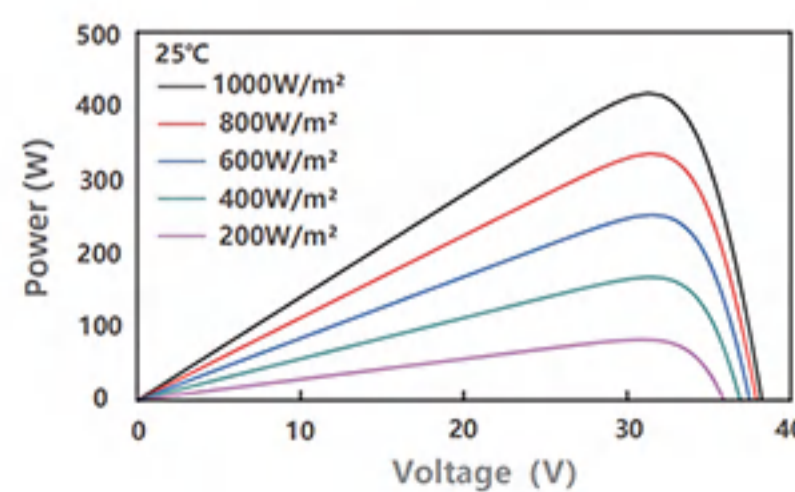
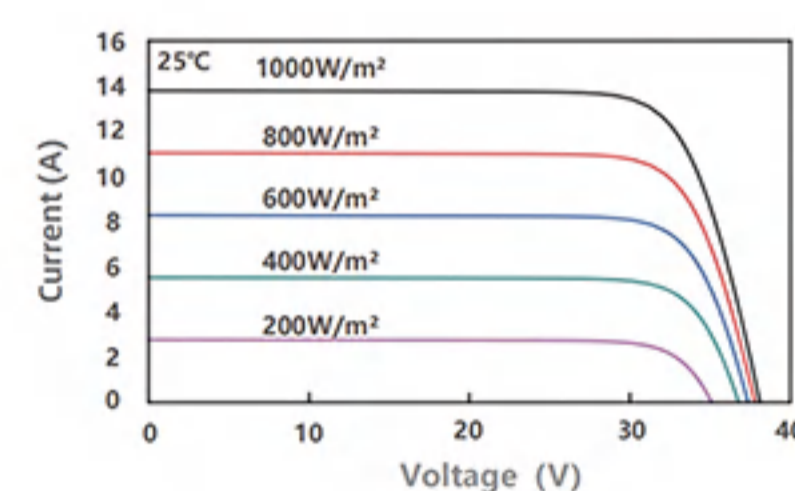
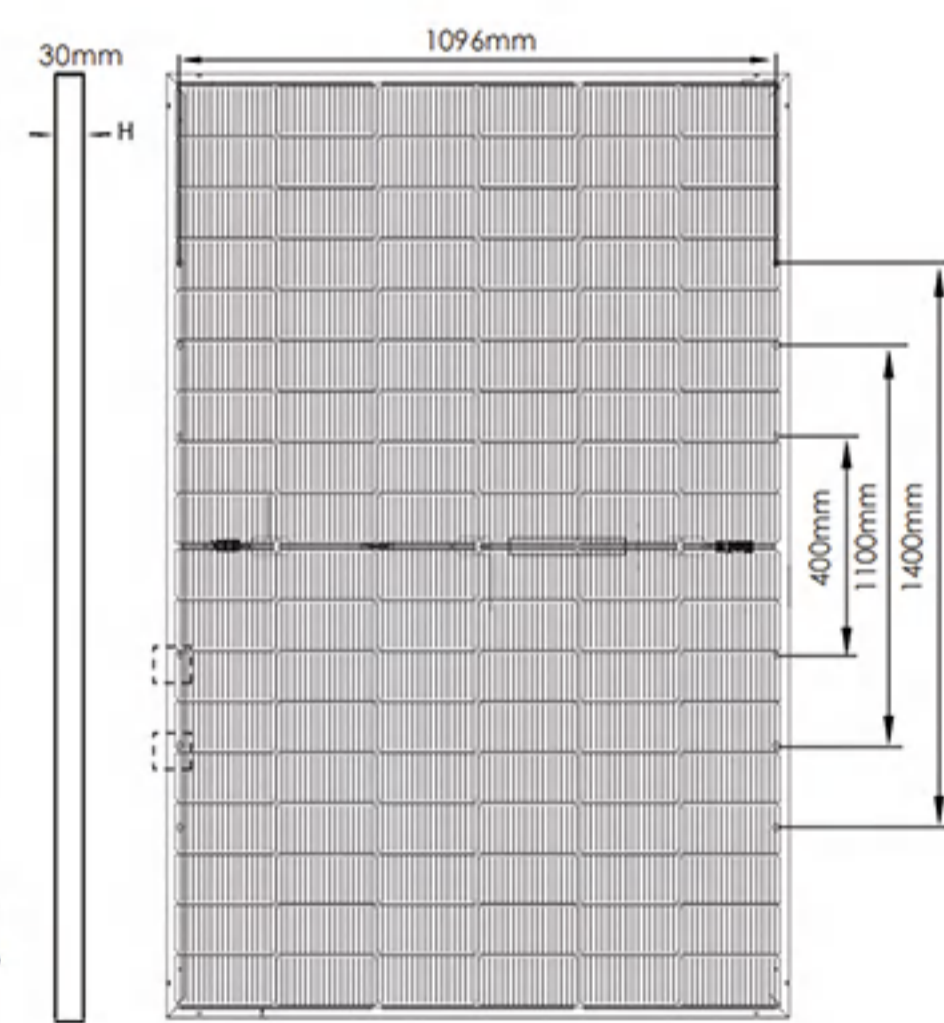
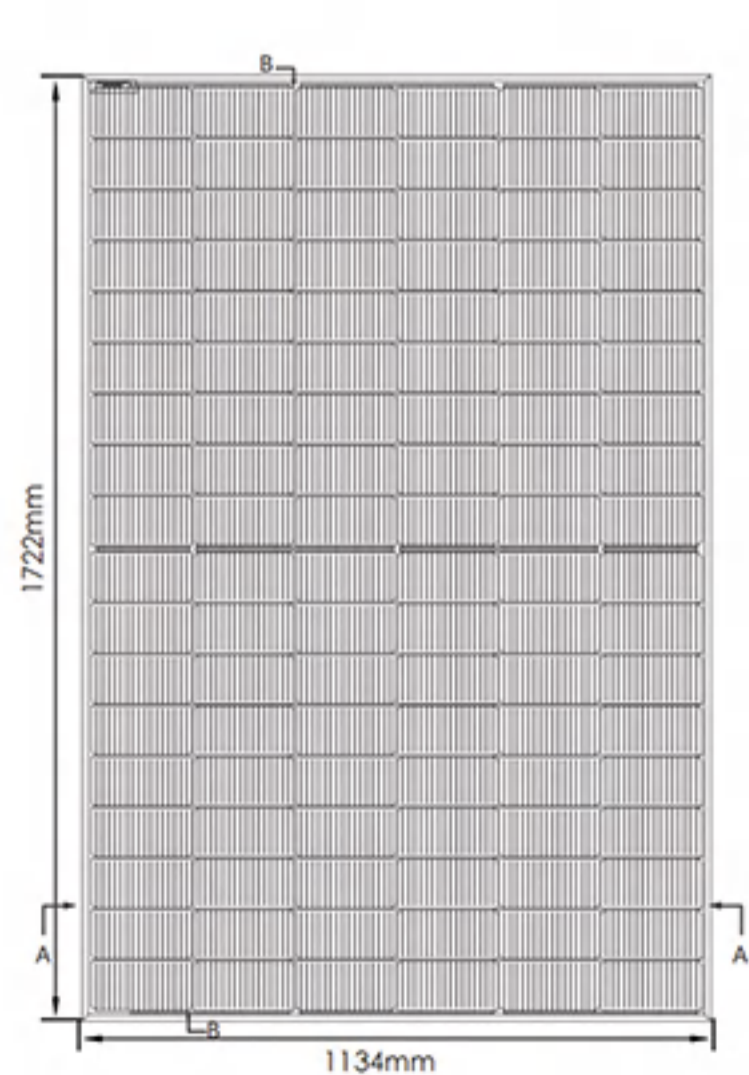


SW440N-108-BIFACIAL

Cell	N Type TOPcon Mono 182*91mm
Weight	24.5kg
Size	1722*1134*30mm
No.of Cells	108(6*18)
Junction Box	IP68
Maximum System Voltage	DC1000V/1500V
Maximum Series Fuse	25A
Moduels Per Pallet	36Pcs
Moduels Per 40HQ	936Pcs

ELECTRICAL PARAMETERS

Module	SW415N-108 ~ SW440N-108					
Encapsulation	Class/Eva/Cell/Eva/Backsheet					
Maximum Power Pmax (W)	415	420	425	430	435	440
Maximum Power Voltage (Vmp/V)	31.70	31.90	32.10	32.30	32.50	32.70
Maximum Power Current (Imp/A)	13.10	13.17	13.24	13.32	13.39	13.46
Open Circuit Voltage (Voc/V)	37.70	37.90	38.10	38.30	38.40	38.60
Short Circuit Current (Isc/A)	13.91	13.98	14.05	14.12	14.18	14.24
Module Efficiency (%)	21.30	21.50	21.80	22.00	22.30	22.50

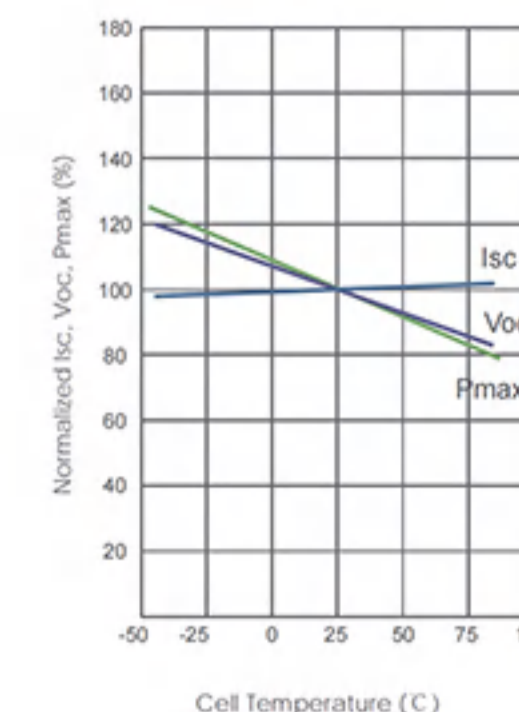
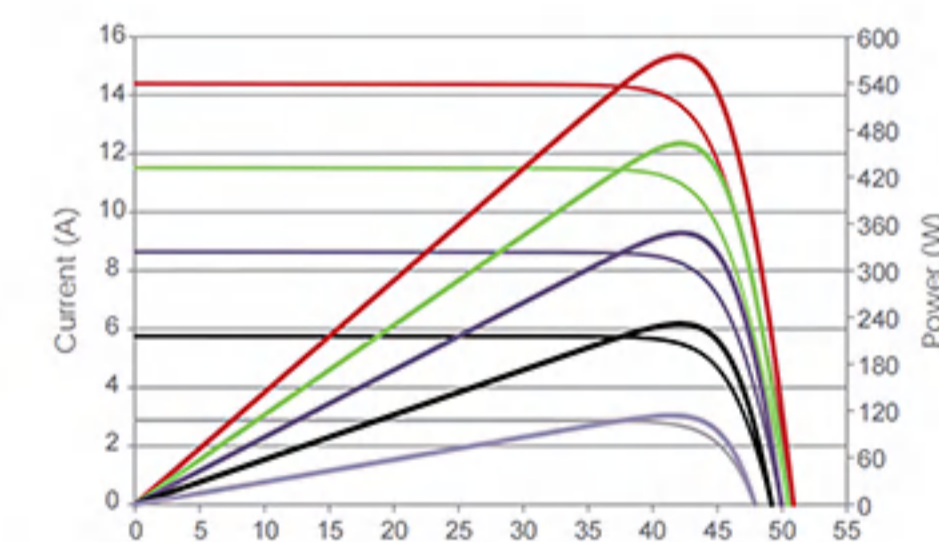
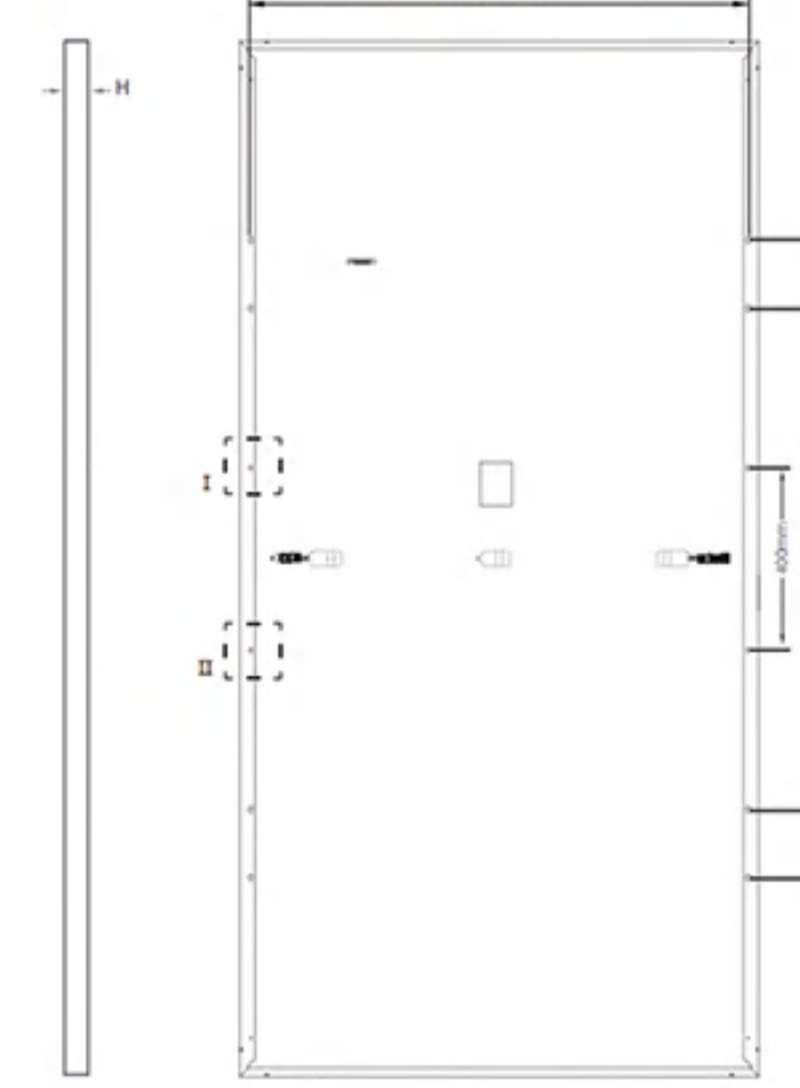
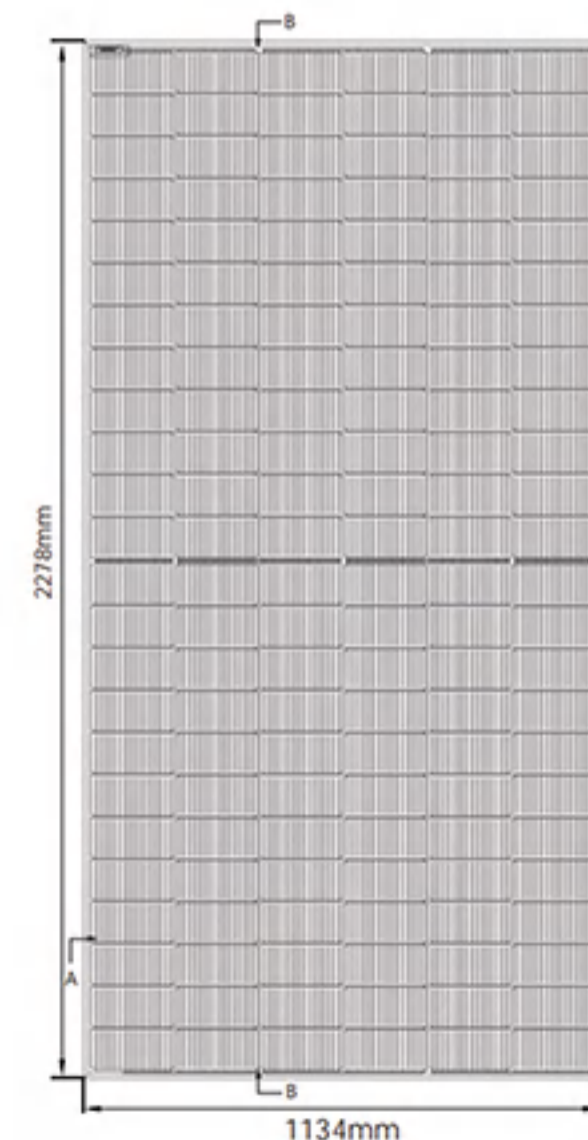


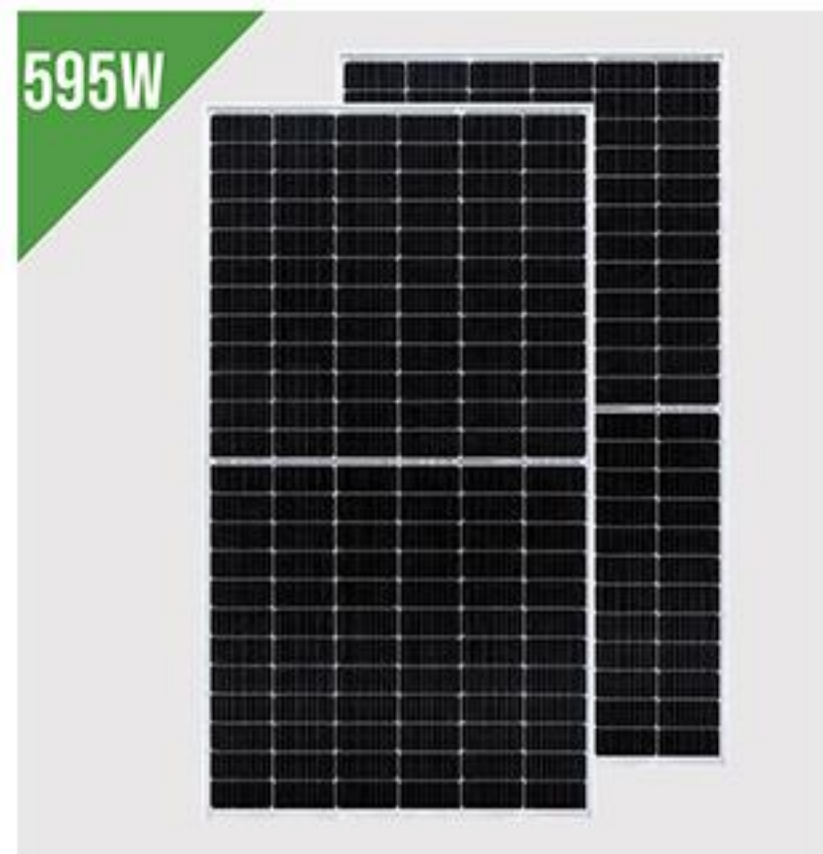
SW590N-144-BIFACIAL

Cell	N Type TOPcon Mono 182*91mm
Weight	28kg
Size	2278*1134*35mm
No.of Cells	144(6*24)
Junction Box	IP68
Maximum System Voltage	DC1000V/1500V(IEC)
Maximum Series Fuse	25A
Moduels Per Pallet	31Pcs
Moduels Per 40HQ	620Pcs

ELECTRICAL PARAMETERS

Module	SW565N-144 ~ SW590N-144					
Encapsulation	Class/Eva/Cell/Eva/Backsheet					
Maximum Power Pmax (W)	565	570	575	580	585	590
Maximum Power Voltage (Vmp/V)	41.92	42.07	42.22	42.37	42.52	42.67
Maximum Power Current (Imp/A)	13.48	13.55	13.62	13.69	13.76	13.83
Open Circuit Voltage (Voc/V)	50.60	50.74	50.88	51.02	51.16	51.30
Short Circuit Current (Isc/A)	14.23	14.31	14.39	14.47	14.55	14.63
Module Efficiency (%)	21.87	22.07	22.26	22.45	22.65	22.85





SW595N-144

Cell	N Type HJT Mono 182*91mm
Weight	32.3kg
Size	2278*1134*30mm
No.of Cells	144(6*24)
Junction Box	IP68 Rated
Maximum System Voltage	DC 1500V
Maximum Series Fuse	30A
Moduels Per Pallet	36Pcs
Moduels Per 40HQ	720Pcs



SW730N-132

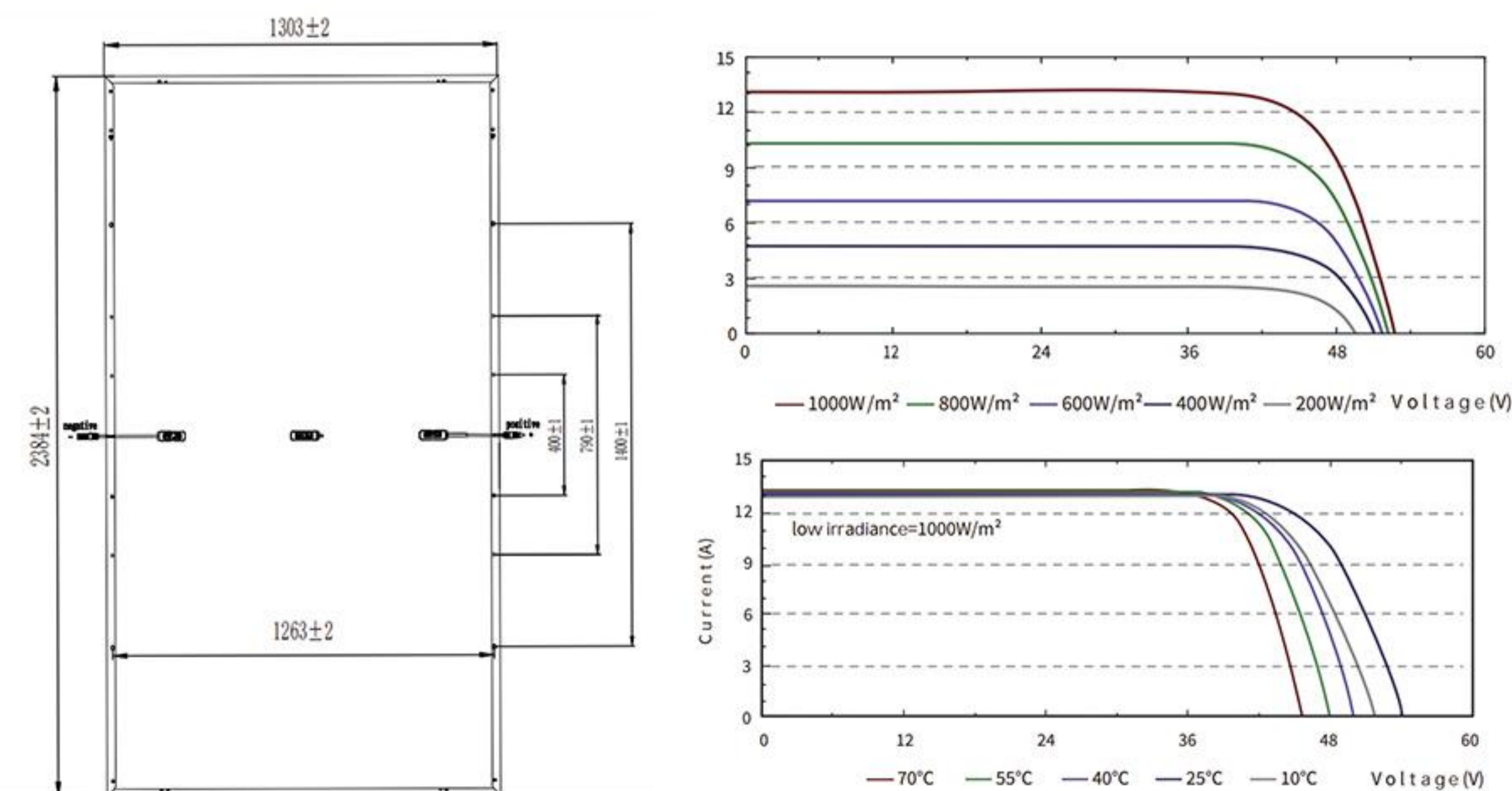
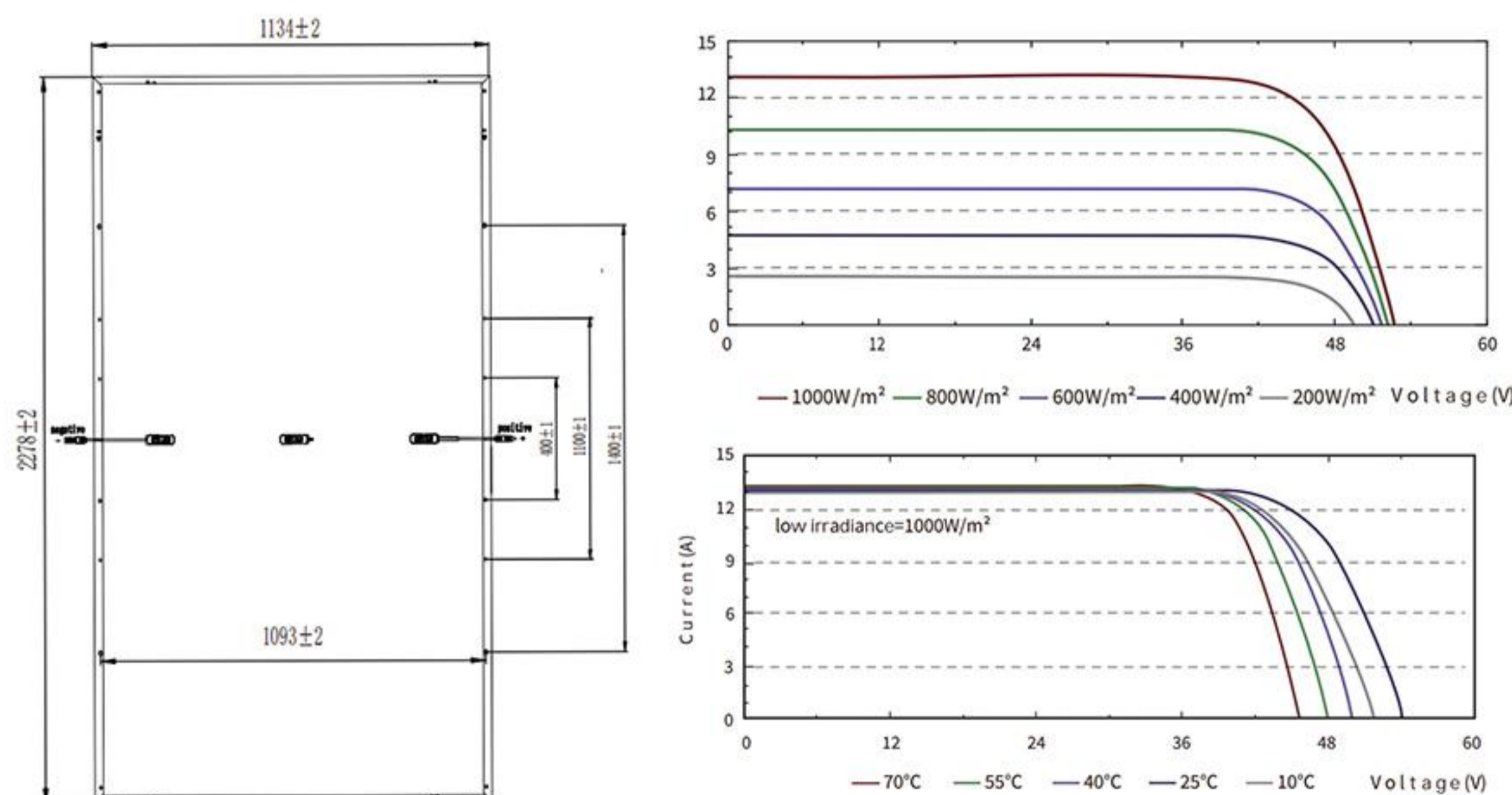
Cell	N Type HJT Mono 210*105mm
Weight	38.3kg
Size	2384*1303*33mm
No.of Cells	132(6*22)
Junction Box	IP68, 3 Bypass Diodes
Maximum System Voltage	DC 1500V
Maximum Series Fuse	30A
Moduels Per Pallet	33Pcs
Moduels Per 40HQ	594Pcs

ELECTRICAL PARAMETERS

Module	SW570N-144 ~ SW595N-144					
Encapsulation	Class/Eva/Cell/Eva/Backsheet					
Maximum Power Pmax (W)	570	575	580	585	590	595
Maximum Power Voltage (Vmp/V)	46.46	46.79	47.12	47.41	47.75	48.03
Maximum Power Current (Imp/A)	12.27	12.29	12.31	12.36	12.36	12.39
Open Circuit Voltage (Voc/V)	53.13	53.44	53.73	53.99	54.31	54.64
Short Circuit Current (Isc/A)	13.12	13.14	13.16	13.19	13.21	13.24
Module Efficiency (%)	22.07	22.26	22.45	22.65	22.85	23.04

ELECTRICAL PARAMETERS

Module	SW700N-132 ~ SW730N-132						
Encapsulation	Class/Eva/Cell/Eva/Backsheet						
Maximum Power Pmax (W)	700	705	710	715	720	725	730
Maximum Power Voltage (Vmp/V)	43.00	43.23	43.46	43.68	43.91	44.13	44.35
Maximum Power Current (Imp/A)	16.28	16.31	16.34	16.37	16.40	16.43	16.46
Open Circuit Voltage (Voc/V)	50.31	50.51	50.71	50.91	51.11	51.31	51.71
Short Circuit Current (Isc/A)	17.21	17.23	17.25	17.27	17.29	17.31	17.33
Module Efficiency (%)	22.53	22.70	22.86	23.02	23.18	23.34	23.50



EU SOLAR INVERTER

Single phase 220v LN / Three-phase 400v 3W+N+PE

1.ON GRID INVERTER

On grid inverter is a special inverter, in addition to the DC can be converted to alternating current, its output alternating current can synchronize with the frequency and phase of the mains, so the output alternating current can be returned to mains.



3~6KW

- MPPT efficiency > 99.9%
- Two MPPT design
- No fans design
- Quick and easy installation



3~25KW

- Quick arc fault circuit interruption
- WIFI standard
- Compact design
- Multiple intelligent protections



30KW

- MPPT efficiency > 99.9%
- IP 68 cooling fan
- Intelligent temperature control system
- Type II DC & AC lightning protection



30~60KW

- MPPT efficiency > 99.9%
- IP 68 cooling fan
- AC output 1.1x continuous operation
- Adjust power factor

2.HYBRID STORAGE INVERTER

When the power grid is normal, the inverter switches to the grid-connected power generation mode. When the power grid is abnormal, the inverter will automatically detect the switch to the off-grid power generation mode. Although the power grid is abnormal, the inverter will continue to output the photovoltaic power inverter into high-quality AC power to supply the load.



1~6KW

- Support for time-of-use optimization
- Configurable operation modes
- Build in anti-feed-in function
- Compact size and easy installation



3~30KW

- Support for time-of-use optimization
- Configurable operation modes
- Build in anti-feed-in function
- Smart monitoring

3.OFF GRID INVERTER

The off-grid inverter is a power conversion device, which pushes and pulls the input DC to boost the voltage, and then converts the input DC into 220V AC through the inverter bridge SPWM sinusoidal pulse width modulation technology.



3.5KW/5.5KW

- Pure sine wave solar inverter
- Output power factor 1
- High PV input voltage range
- Built-in MPPT solar controller
- Wifi/GPRS remote monitoring



8-12KW

- IP65 protection grade for outdoor use
- Time-slot charging & discharging for peak and valley price
- Support self-use/without battery/on-grid output mode
- Support BMS communication
- Up to 1000V PV input voltage, ideal for high power



10~30KW



15~30KW



30~500KW

US SOLAR INVERTER

Single phase 120v LN / Split Phase 120/240v LNL
 Three-phase 230v 3W+N+PE / Three-phase 480v 3W+N+PE

1.ON GRID INVERTER



3~6KW

- MPPT efficiency > 99.9%
- Two MPPT design
- No fans design
- Quick and easy installation



3~15KW

- Quick arc fault circuit interruption
- WIFI standard
- String level monitoring
- Multiple intelligent protections



17~30KW

- MPPT efficiency > 99.9%
- IP 68 cooling fan
- Intelligent temperature control system
- Type II DC & AC lightning protection



30~60KW

- MPPT efficiency > 99.9%
- IP 68 cooling fan
- AC output 1.1x continuous operation
- Adjust power factor

2.HYBRID STORAGE INVERTER

Sunway storage inverters delta voltage series are designed to increase energy independence for homeowners and commercial users. The power range is from 3kW to 17kW, compatible with low voltage (150-800V) batteries. Energy management is based on time-of-use and demand charge rate structures, significantly reduce the amount of energy purchased from public grid. Thanks for the UPS function (switch time < 10ms), enables the crucial loads power on during outages. Additionally, under the backup operation mode, the inverter provides you up to 150% peak output overloading.



3~9.6KW

- Support for time-of-use optimization
- Configurable operation modes
- Build in anti-feed-in function
- Compact size and easy installation



3~17KW

- Support for time-of-use optimization
- Configurable operation modes
- Build in anti-feed-in function
- Smart monitoring

3.OFF GRID INVERTER

The off-grid inverter is a power conversion device, which pushes and pulls the input DC to boost the voltage, and then converts the input DC into 120v or split phase AC through the inverter bridge SPWM sinusoidal pulse width modulation technology.



5KW

- Suitable for of-grid applications
- Stable output of pure sine waves
- Support BMS communication
- Multiple charge and discharge modes are available



8KW/10KW

- IP65 protection grade for outdoor use
- Time-slot charging & discharging for peak and valley price
- Support self-use/without battery/on-grid output mode
- Support BMS communication



10~30KW



15~30KW



30~500KW

SOLAR BATTERY

SUNWAY BRAND LITHIUM BATTERY



SW51B100TW2/SW51B200TW2

5.22KWH/10.44KWH

FEATURES:

- ▶ Reduce floor space, wall-mounted installation(PowerWall)
- ▶ LFP rechargeable battery A+ Grade cell
- ▶ IP65 protection class, suit for outdoor installation
- ▶ Extramly long life cycle, more than 6000 times or 10 years
- ▶ Good extendibility, 5kWh each, easy extend to 5kWh/10kWh/15kWh..
- ▶ Good compatibility, standard communication protocol. CAN and RS485, compatible with most popular hybrid and off grid inverters in the market

PRODUCT SIZE:



420mm

700mm



163mm

700mm



SW48B-HV-2500

Nominal Voltage: 144-384V

Nominal Capacity: 52AH

Nominal Energy: 2.5-20kWh

Advantage:

- ✓ Modular design
- ✓ Capacity/power can be freely selected
- ✓ Safe and reliable
- ✓ More than 6000 times or 10 years
- ✓ Reliable LiFePO4 battery cell

SWB51100

Nominal Voltage: 51.2V

Single Module Capacity: 5.12kwh

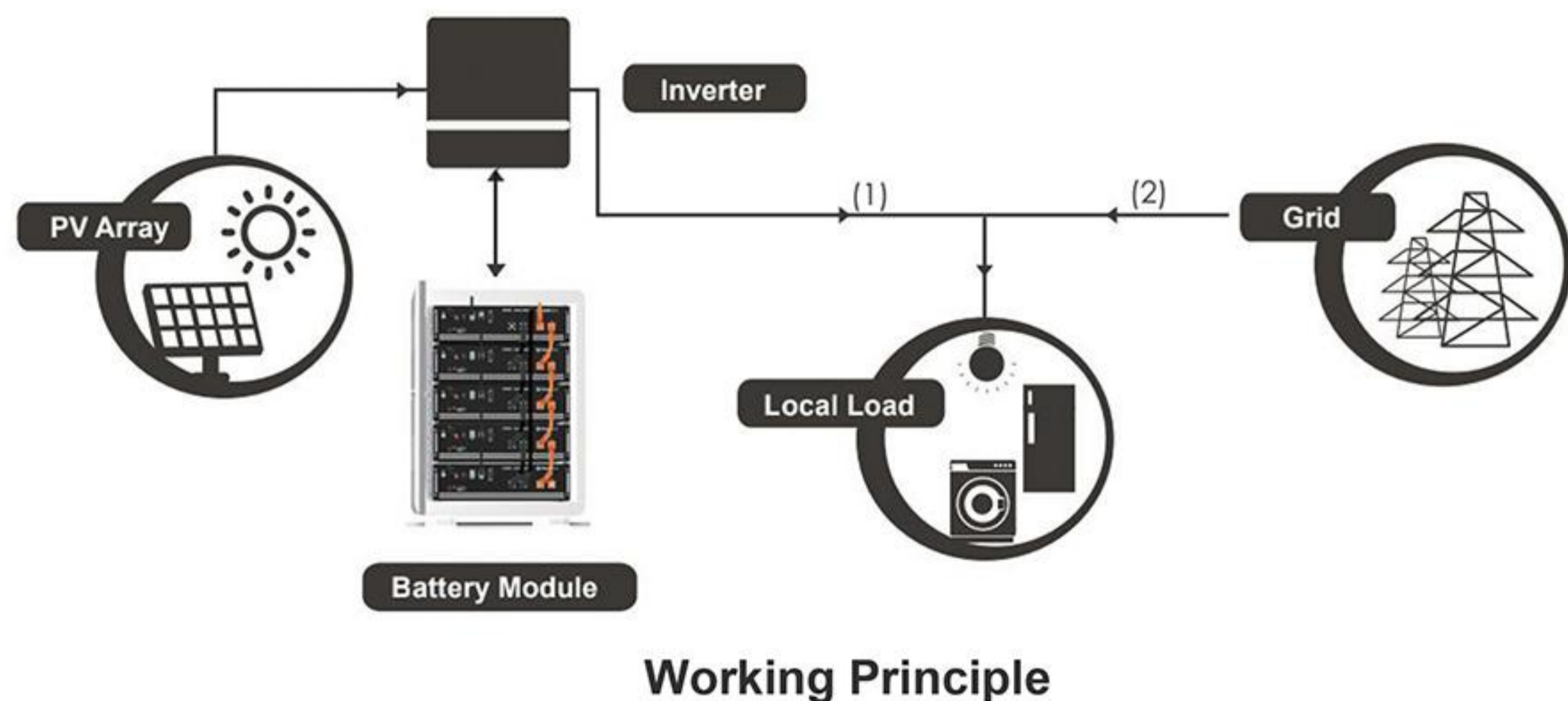
Module Size: 600*440*200mm



SOLAR BATTERY

—RACK MOUNTED LITHIUM BATTERY

Lithium-ion battery is a kind of battery which is made of lithium metal or lithium alloy as positive/negative material and uses non-aqueous electrolyte solution.



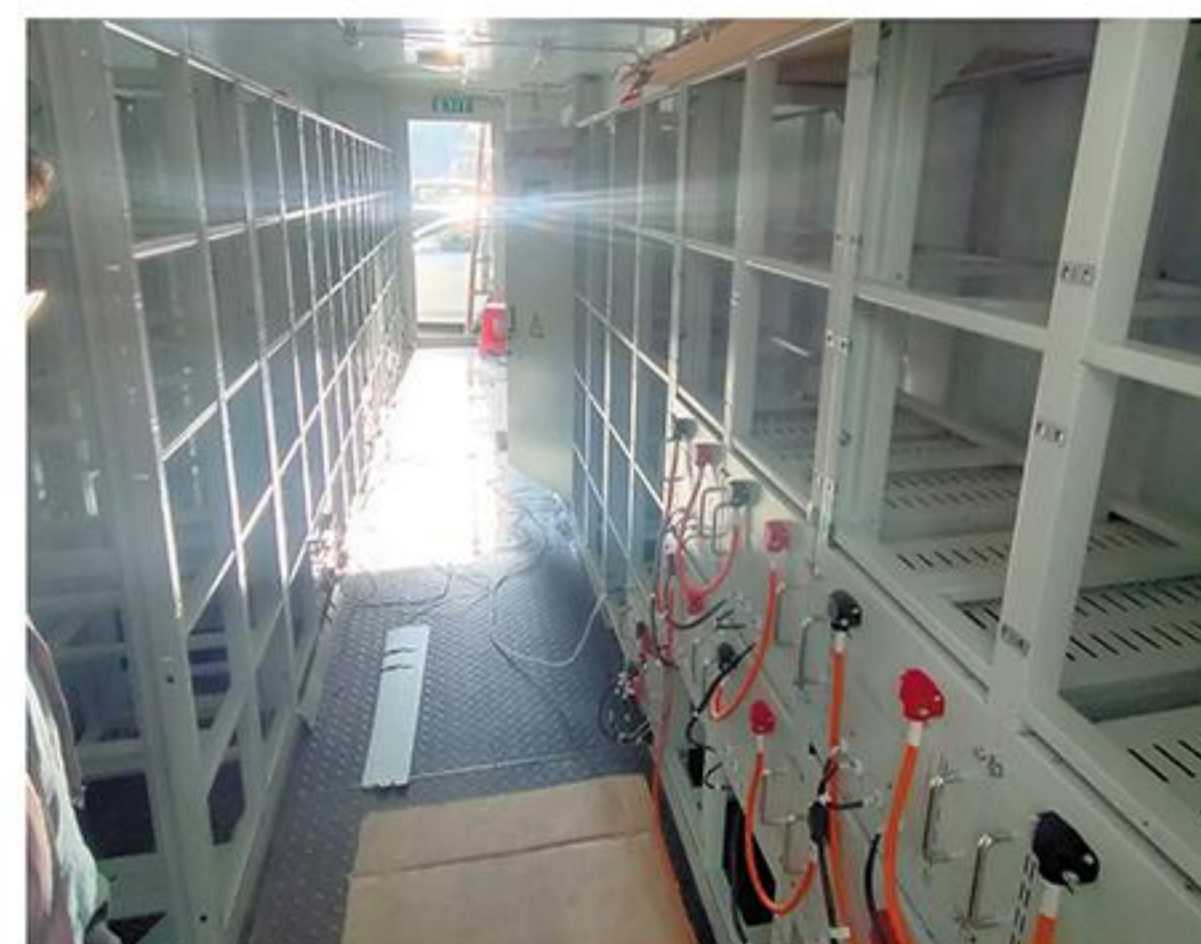
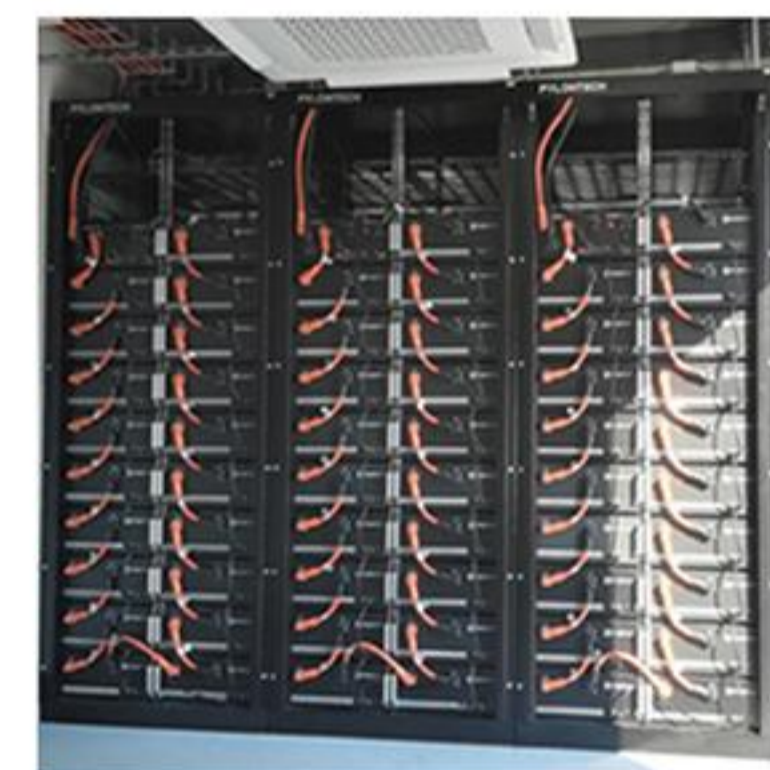
★ FEATURES:

- ▶ Compact size and light weight
- ▶ 6000 cycles, 10 years design life
- ▶ Safe lithium iron phosphate battery cell
- ▶ Standard design with helpful pulling ear quick stacking
- ▶ TUV, CE, IEC62619, IEC62040, UN38.3 CEC, MSDS certifications
- ▶ Each module is equipped with an independent BMS system



PRODUCT DISPLAY

50AH/100AH/200AH



GEL LEAD ACID BATTERY(12V/2V)

Gel lead-acid battery is an improvement of ordinary lead-acid battery with liquid electrolyte. The colloid electrolyte is used to replace sulphuric acid electrolyte. Compared with ordinary battery, the gel electrolyte has better safety, storage capacity, discharge performance and service life.

★ FEATURES:

- ▶ Deep cycle long lifespan
- ▶ High discharge performance
- ▶ Easy installation and maintenance-free
- ▶ The designed life for the battery could be eight years up for float use
- ▶ Contemporary advanced technology research and development of new high-performance battery



🔋 BATTERY PARAMETERS

Reted Voltage	12V				2V						
	100Ah	150Ah	200Ah	250Ah	500Ah	800Ah	1000Ah	1500Ah	2000Ah	3000Ah	
Capacity	100Ah	150Ah	200Ah	250Ah	500Ah	800Ah	1000Ah	1500Ah	2000Ah	3000Ah	
Weight	28.8kg	42.5kg	56.7kg	70.5kg	29.2kg	49.5kg	58kg	92kg	123kg	181kg	
Max Discharge Current	30I 10A(3min)										
Max Charge Current	≤0.25C 10										
Self Discharge(25°C)	<3% month										
Recommended Using Temperature	15°C~25°C										
Cover Material	ABS										
Using Temperature	Discharge:-45°C~50°C				Charge:-20°C~45°C			Storage: -30°C~40°C			
Charge Voltage(25°C)	Float Charge:13.5V-13.8V Average Charge:14.4V-14.7V				Float Charge:2.23-2.27V Average Charge:2.35-2.40V						
Charge Mode(25°C)	Float Charge:2.275±0.025V/Cell				Temperature Compensation Coefficient :±3 mV/Cell °C						
	Cycle Charge:2.45±0.05V/Cell				Temperature Compensation Coefficient: ±5 mV/Cell °C						
Cycle Life	100%DOD 572times; 50%DOD 1422 times; 30%DOD 2218times.				100%DOD 1260times, 80%DOD 1770 times						
Capacity Affected by Temperature	105%@40°C,85%@0°C,60%@-20°C										

LITHIUM IRON PHOSPHATE BATTERY



Longer Cycle Life

LiFePO4 batteries would be is five times than SLA batteries on cycle life

High Power&Light weight

LiFePO4 batteries performance twice power of SLA batteries,while half weight helpful for transport and installation

Intelligent management control

Intelligent BMS system covered by LFP batteries to ensure thatbatter-ies work on safety and perfect condition

Lower Self-discharge rate

Lower Self-discharge rate to guarantee LFP batteries be stored more longer than SLA batteries

🔋 BATTERY PARAMETERS

Model	SW25100	SW25200
Chemistry	LiFePO4	
Nominal Voltage	25.6V	
Nominal Capacity	100Ah(C5,25°C)	200Ah(C5,25°C)
Energy	2560Wh	5120Wh
Internal Resistance	≤50mΩ	
Cycle Life	>6000cycles@0.5C80%DOD	
Months Self Discharge	<3%	
Efficiency of Charge	100%@0.5C	
Efficiency of Discharge	96-99%@1C	
Charge Voltage	29.2±0.2V	
Charge Mode	0.2C to 29.2V,then 29.2V,charge current to 0.02C(CC/CV)	
Charger Current	100A	200A
Max.Charge Current	100A	200A
Charge Cut-off Voltage	31.2V±0.2V	
Rated Discharge Current	100A	200A
Max Discharge Current	100A	200A
Max.Pulse Current	600A(<3s)	
Discharge Cut-off Voltage	20V	
Water Dust Resistance	IP65	
BMS	4P SMART Bluetooth	
Plastic Case	ABS	
Dimensions	483*170*240mm	640*245*220mm
Weight	19kg	38kg
Terminal	M8	