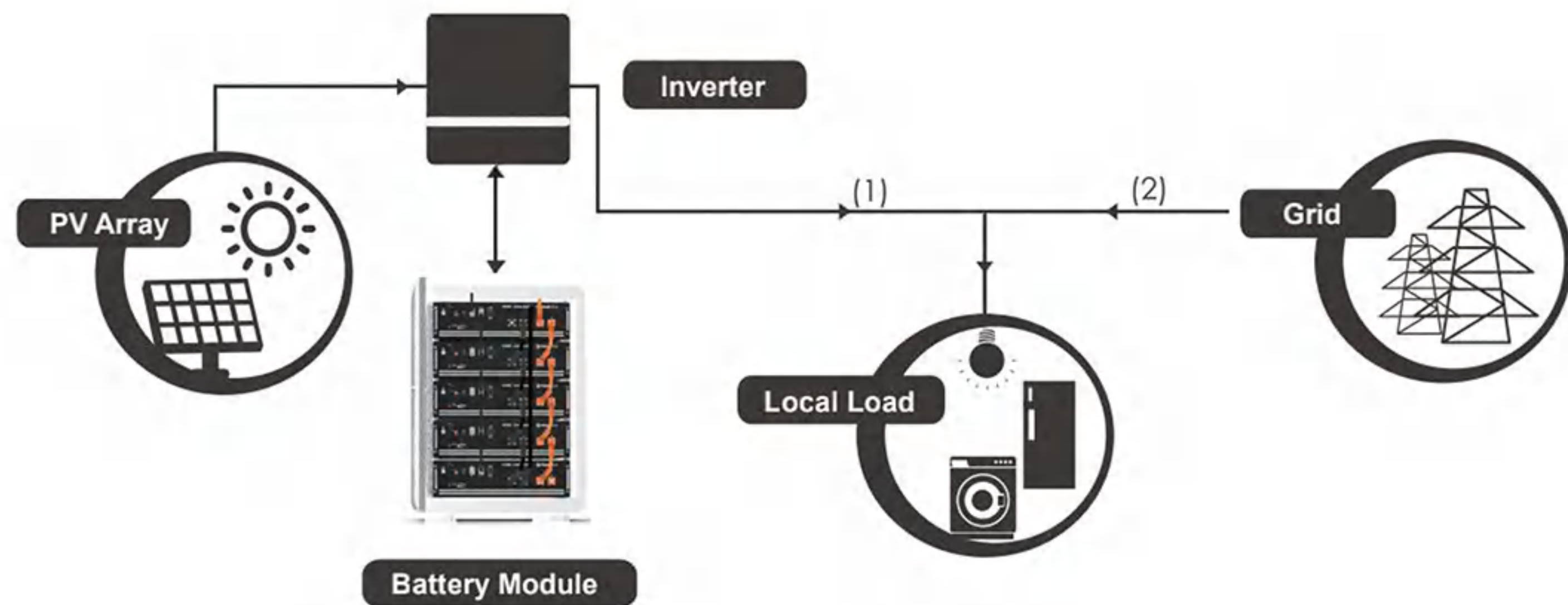


SOLAR BATTERY

LITHIUM BATTERY

Lithium-ion battery is a kind of battery which is made of lithium metal or lithium alloy as positive/negative material and uses non-aqueous electrolyte solution.



Working Principle

★ FEATURES:

- Compact size and light weight
- 6000 cycles, 10 years design life
- Safe lithium iron phosphate battery cell
- Standard design with helpful pulling ear quick stacking
- TUV CE IE62619 IEC62040 UN38.3 CEC certifications
- Each module is equipped with an independent BMS system



PRODUCT DISPLAY



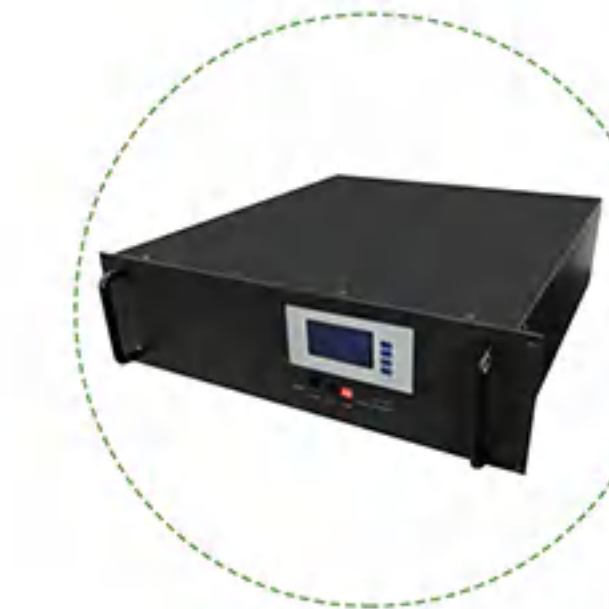
50~74AH



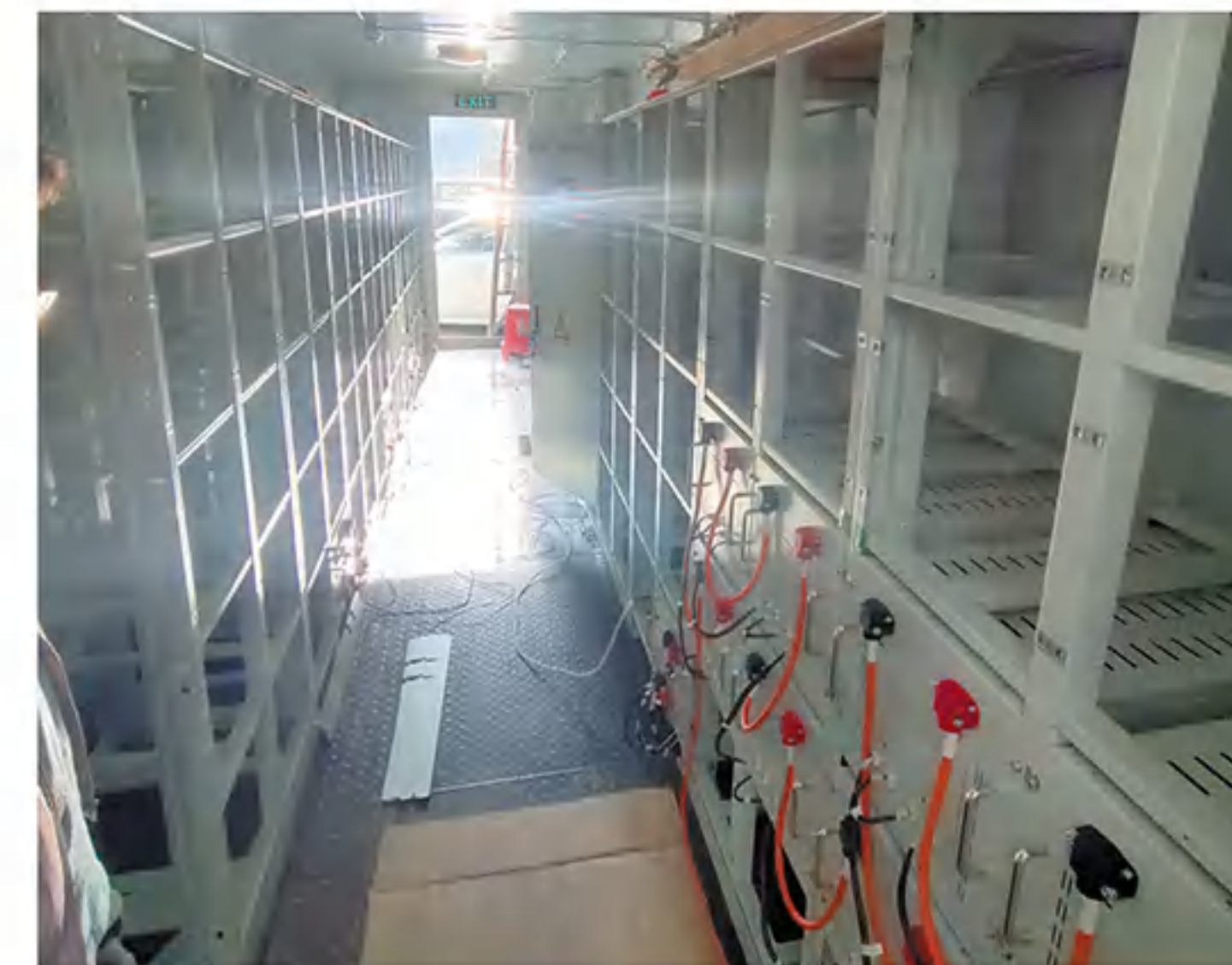
100~200AH



100AH



50~100AH





Nominal Voltage: 48V/51.2V

Nominal Capacity: 100AH/150AH/200AH

Product Warranty: 5 Years

SOLAR BATTERY

—WALL-MOUNTED LITHIUM BATTERY

51.2V200AH

FEATURES:

- ▶ Wall mounted good-looking appearance
- ▶ Long warranty period, 5 years
- ▶ Higher energy density, light and small volume for household
- ▶ Support Connected in parallel mode for expansion
- ▶ Compatible with Solar, ESS or UPS System
- ▶ Remote control and monitor from PC or cellphone terminals



Nominal Voltage: 48V/51.2V

Nominal Capacity: 50AH/100AH/150AH

Product Warranty: 5 Years



Nominal Voltage: 48V/51.2V

Nominal Capacity: 200AH

Product Warranty: 5 Years

SOLAR BATTERY

REMOVABLE LITHIUM BATTERY

Advantage:

- ✓ Easy to move
- ✓ Remote control
- ✓ Modular design
- ✓ Capacity/power can be freely selected
- ✓ Safe and reliable
- ✓ With a design life of more than 10 years
- ✓ Reliable LiFePO4 battery Cell
- ✓ compact and light, single person installation



SWB51.2V-400Ah

Nominal Voltage: 51.2V

Nominal Capacity: 300AH/400AH

Module Size: 920*735*235mm

SWB51.2V-55Ah

Nominal Voltage: 51.2V

Nominal Capacity: 55AH

Module Size: 227x280x486mm(1 UNIT)

