

HALF CELL SOLAR PANEL

The internal structure design of half - piece components includes three ways: series structure, series - parallel structure and parallel - series structure.



01 High customer value

- Lower LCOE (Levelized Cost Of Energy), reduced BOS (Balance of System) cost, shorter payback time
- Lowest guaranteed first year and annual degradation

02 High power

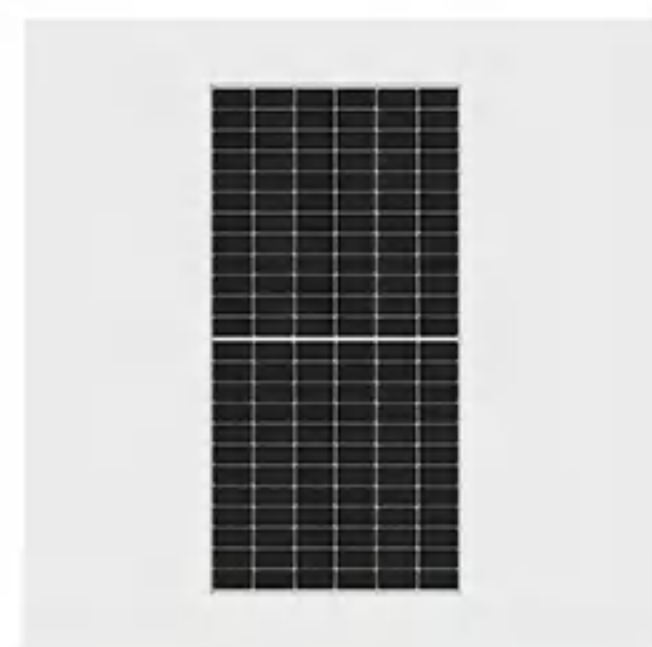
- High module efficiency with high density interconnect technology

03 High reliability

- Minimized micro-cracks with innovative non-destructive cutting technology

04 High energy yield

- Excellent IAM (Incident Angle Modifier) and low irradiation performance, validated by 3rd party certifications



GLASS

- Anti-reflective glass
- High-transmittance and low reflection
- Increase model efficiency
- High mechanical strength



CELL

- High PID resistant
- Low breakage rate
- Uniform color
- High Efficiency PV Cells



FRAME

- Optional silvery or black frame
- Tensile Strength Frame
- Boost bearing capability and prolong service life



JUNCTION BOX

- Waterproofness Junction Box
- IP67 protection level
- Quality diode ensures module running safety
- Heat dissipation

PRODUCT DISPLAY

120 Cells / 132Cells/144 Cells / 156Cells



120 Cells 210mm

MAX 605W

- Weight: 31.5kg
- Power Warranty: 30 Years
- Max Efficiency: 21.40%
- Size: 2172*1303*30mm



132 Cells 210mm

MAX 670W

- Weight: 34.5kg
- Power Warranty: 30 Years
- Max Efficiency: 21.60%
- Size: 2384*1303*35mm



120 Cells 166mm

MAX 375W

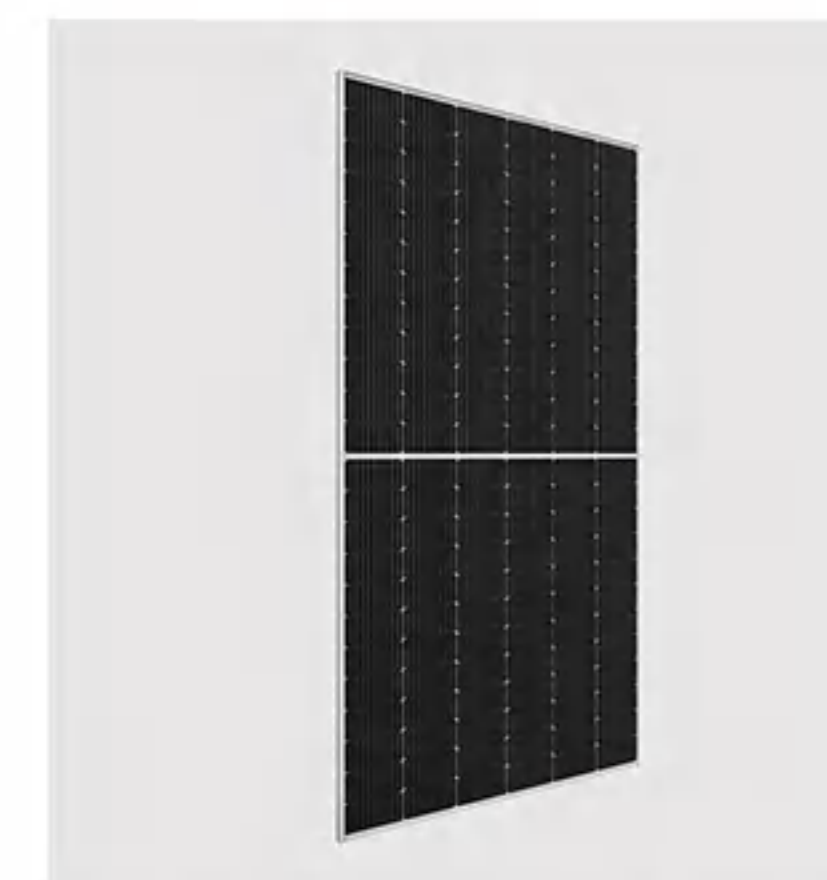
- Weight: 19.8kg
- Power Warranty: 25 Years
- Max Efficiency: 20.27%
- Size: 1755*1038*35mm



144 Cells 166mm

MAX 480W

- Weight: 24.5kg
- Power Warranty: 25 Years
- Max Efficiency: 21.73%
- Size: 2094*1038*35mm



144 Cells 182mm

MAX 550W

- Weight: 29kg
- Power Warranty: 25 Years
- Max Efficiency: 21.50%
- Size: 2279*1133*35mm



156 Cells 182mm

MAX 600W

- Weight: 31.5kg
- Power Warranty: 25 Years
- Max Efficiency: 21.38%
- Size: 2376*1133*35mm